



Sentinels of the Multiverse – Riftverse: Hero Deck: Zenobia

EBONY



CAT

ZENOBI A DEALS 1 TARGET 2 COLD DAMAGE. THEN MOVE THIS CARD BENEATH YOUR CHARACTER CARD.

I SWEAR THERE'S A COLD DRAFT WHEN SHE LOOKS AT ME.



CINDER



CAT

ZENOBI A DEALS 1 TARGET 2 MELEE DAMAGE. THEN MOVE THIS CARD BENEATH YOUR CHARACTER CARD.

BONZAI



LUCY



CAT

ZENOBI A DEALS 1 TARGET 2 SONIC DAMAGE. THEN MOVE THIS CARD BENEATH YOUR CHARACTER CARD.

THERE'S NOTHING QUITE LIKE A CAT YOWLING IN THE MIDDLE OF THE NIGHT.



CLEO



CAT

ZENOBI A DEALS 1 TARGET 2 INFERNAL DAMAGE. THEN MOVE THIS CARD BENEATH YOUR CHARACTER CARD.

I'M NOT SURE SHE'S REALLY A CAT. MORE OF A SHADOW FAIRIE.



OPHELIA



CAT

ZENOBIAS DEALS 1 TARGET 2 RADIANT DAMAGE. THEN MOVE THIS CARD BENEATH YOUR CHARACTER CARD.

ON THE BRIGHT SIDE, YOU CAN SEE THEM IN THE DAYLIGHT.



HAZEL



CAT

ZENOBIAS DEALS 1 TARGET 2 PSYCHIC DAMAGE. THEN MOVE THIS CARD BENEATH YOUR CHARACTER CARD.

IF YOU THINK SHE'S LOOKING INTO YOUR SOUL...
WELL... YOU'RE NOT WRONG.



GYPSY



CAT

ZENOBIAS DEALS 1 TARGET 2 ENERGY DAMAGE. THEN MOVE THIS CARD BENEATH YOUR CHARACTER CARD.

BOTTLE IT, AND THE ENERGY CRISIS IS OVER.



KITTY, KITTY!



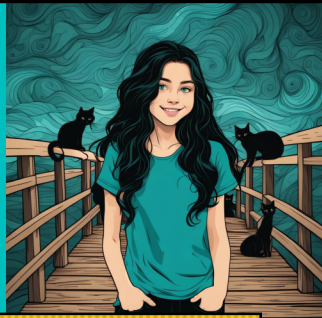
ONE-SHOT

REVEAL CARDS FROM THE TOP OF YOUR DECK UNTIL A [CAT] CARD IS REVEALED. YOU MAY DRAW OR PLAY THE REVEALED [CAT] CARD. SHUFFLE THE OTHER REVEALED CARDS BACK INTO YOUR DECK.

THEY STARTED SHOWING UP WHEN I WAS THIRTEEN.
I'D TURN AROUND, AND TURN BACK, AND THERE WAS A BLACK CAT SITTING THERE, LIKE SHE'D ALWAYS BEEN THERE.



KITTY, KITTY!



ONE-SHOT

REVEAL CARDS FROM THE TOP OF YOUR DECK UNTIL A [CAT] CARD IS REVEALED. YOU MAY DRAW OR PLAY THE REVEALED [CAT] CARD. SHUFFLE THE OTHER REVEALED CARDS BACK INTO YOUR DECK.

THEY STARTED SHOWING UP WHEN I WAS THIRTEEN. I'D TURN AROUND, AND TURN BACK, AND THERE WAS A BLACK CAT SITTING THERE, LIKE SHE'D ALWAYS BEEN THERE.



KITTY, KITTY!



ONE-SHOT

REVEAL CARDS FROM THE TOP OF YOUR DECK UNTIL A [CAT] CARD IS REVEALED. YOU MAY DRAW OR PLAY THE REVEALED [CAT] CARD. SHUFFLE THE OTHER REVEALED CARDS BACK INTO YOUR DECK.

THEY STARTED SHOWING UP WHEN I WAS THIRTEEN. I'D TURN AROUND, AND TURN BACK, AND THERE WAS A BLACK CAT SITTING THERE, LIKE SHE'D ALWAYS BEEN THERE.



STALKING BEHAVIOR



ONE-SHOT

YOU MAY MOVE UP TO 2 [CAT] CARDS FROM BENEATH YOUR CHARACTER CARD TO YOUR HAND. YOU MAY PLAY A CARD.

THEY'LL PONCE ON YOU WHEN YOU LEAST EXPECT IT. I'VE HAD A COUPLE OF DATES AND VERY SUDDENLY



STALKING BEHAVIOR



ONE-SHOT

YOU MAY MOVE UP TO 2 [CAT] CARDS FROM BENEATH YOUR CHARACTER CARD TO YOUR HAND. YOU MAY PLAY A CARD.

THEY'LL PONCE ON YOU WHEN YOU LEAST EXPECT IT. I'VE HAD A COUPLE OF DATES AND VERY SUDDENLY



STALKING BEHAVIOR



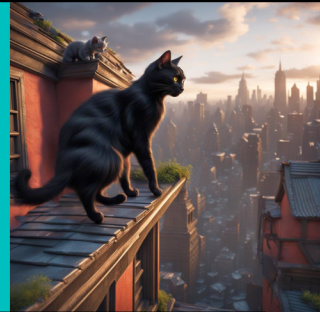
ONE-SHOT

YOU MAY MOVE UP TO 2 [CAT] CARDS FROM BENEATH YOUR CHARACTER CARD TO YOUR HAND. YOU MAY PLAY A CARD.

THEY'LL POUNCE ON YOU WHEN YOU LEAST EXPECT IT. I'VE HAD A COUPLE OF DATES AND VERY SUDDENLY



OVERWATCH



ONGOING, LIMITED

WHEN A NON-HERO CARD WOULD ENTER PLAY, YOU MAY DISCARD IT INSTEAD. IF YOU DO, PLAY THE TOP CARD OF THE DECK THAT THE DISCARDED CARD CAME FROM, AND THEN DESTROY THIS CARD.

THEY WATCH, AND THEY'RE ALWAYS THERE... SOMEWHERE.



OVERWATCH



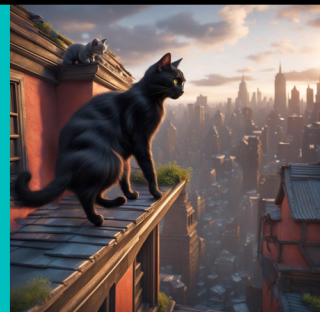
ONGOING, LIMITED

WHEN A NON-HERO CARD WOULD ENTER PLAY, YOU MAY DISCARD IT INSTEAD. IF YOU DO, PLAY THE TOP CARD OF THE DECK THAT THE DISCARDED CARD CAME FROM, AND THEN DESTROY THIS CARD.

THEY WATCH, AND THEY'RE ALWAYS THERE... SOMEWHERE.



OVERWATCH



ONGOING, LIMITED

WHEN A NON-HERO CARD WOULD ENTER PLAY, YOU MAY DISCARD IT INSTEAD. IF YOU DO, PLAY THE TOP CARD OF THE DECK THAT THE DISCARDED CARD CAME FROM, AND THEN DESTROY THIS CARD.

THEY WATCH, AND THEY'RE ALWAYS THERE... SOMEWHERE.



CLEVER GIRL



ONE-SHOT

DESTROY A NON-CHARACTER CARD TARGET WITH HP LESS THAN OR EQUAL TO THE NUMBER OF [CAT] CARDS UNDER YOUR CHARACTER CARD.

THEY SENSE FEAR, AND THEY WILL GANG UP ON YOU.



CLEVER GIRL



ONE-SHOT

DESTROY A NON-CHARACTER CARD TARGET WITH HP LESS THAN OR EQUAL TO THE NUMBER OF [CAT] CARDS UNDER YOUR CHARACTER CARD.

THEY SENSE FEAR, AND THEY WILL GANG UP ON YOU.



CLEVER GIRL



ONE-SHOT

DESTROY A NON-CHARACTER CARD TARGET WITH HP LESS THAN OR EQUAL TO THE NUMBER OF [CAT] CARDS UNDER YOUR CHARACTER CARD.

THEY SENSE FEAR, AND THEY WILL GANG UP ON YOU.



CLEVER GIRL



ONE-SHOT

DESTROY A NON-CHARACTER CARD TARGET WITH HP LESS THAN OR EQUAL TO THE NUMBER OF [CAT] CARDS UNDER YOUR CHARACTER CARD.

THEY SENSE FEAR, AND THEY WILL GANG UP ON YOU.



FOLLOWED HOME



ONE-SHOT

REVEAL THE TOP FIVE CARDS OF YOUR DECK. PLAY ANY REVEALED [CAT] CARDS. DISCARD THE OTHER REVEALED CARDS.

THEY MOSTLY SHOW UP ON STORMY NIGHTS. MOSTIX



FOLLOWED HOME



ONE-SHOT

REVEAL THE TOP FIVE CARDS OF YOUR DECK. PLAY ANY REVEALED [CAT] CARDS. DISCARD THE OTHER REVEALED CARDS.

THEY MOSTLY SHOW UP ON STORMY NIGHTS. MOSTIX



FOLLOWED HOME



ONE-SHOT

REVEAL THE TOP FIVE CARDS OF YOUR DECK. PLAY ANY REVEALED [CAT] CARDS. DISCARD THE OTHER REVEALED CARDS.

THEY MOSTLY SHOW UP ON STORMY NIGHTS. MOSTIX



FOLLOWED HOME



ONE-SHOT

REVEAL THE TOP FIVE CARDS OF YOUR DECK. PLAY ANY REVEALED [CAT] CARDS. DISCARD THE OTHER REVEALED CARDS.

THEY MOSTLY SHOW UP ON STORMY NIGHTS. MOSTIX



DEFEND THE PACK MOTHER



ONGOING, LIMITED

POWER: ZENOBIA DEALS 1 TARGET 3 DAMAGE OF ANY TYPE LISTED ON A [CAT] CARD BENEATH YOUR CHARACTER CARD.

I'M THEIR PERSON.
YOU COME AT ME, THEY COME AT YOU.



DEFEND THE PACK MOTHER



ONGOING, LIMITED

POWER: ZENOBIA DEALS 1 TARGET 3 DAMAGE OF ANY TYPE LISTED ON A [CAT] CARD BENEATH YOUR CHARACTER CARD.

I'M THEIR PERSON.
YOU COME AT ME, THEY COME AT YOU.



DEFEND THE PACK MOTHER



ONGOING, LIMITED

POWER: ZENOBIA DEALS 1 TARGET 3 DAMAGE OF ANY TYPE LISTED ON A [CAT] CARD BENEATH YOUR CHARACTER CARD.

I'M THEIR PERSON.
YOU COME AT ME, THEY COME AT YOU.



SECRET CHAMBER



ONE-SHOT

EACH PLAYER MAY SEARCH THEIR DECK FOR AN [ONGOING] OR [EQUIPMENT] CARD, MOVE IT TO THEIR HAND, AND SHUFFLE THEIR DECK.

THEY LED ME HERE ONE DAY, AND WOULDN'T LET ME LEAVE.
WHEN THEY FINALLY DID, THE WORLD HAD ENDED.



SECRET CHAMBER



ONE-SHOT

EACH PLAYER MAY SEARCH THEIR DECK FOR AN [ONGOING] OR [EQUIPMENT] CARD, MOVE IT TO THEIR HAND, AND SHUFFLE THEIR DECK.

THEY LED ME HERE ONE DAY AND WOULDN'T LET ME LEAVE.
WHEN THEY FINALLY DID, THE WORLD HAD ENDED.



SECRET CHAMBER



ONE-SHOT

EACH PLAYER MAY SEARCH THEIR DECK FOR AN [ONGOING] OR [EQUIPMENT] CARD, MOVE IT TO THEIR HAND, AND SHUFFLE THEIR DECK.

THEY LED ME HERE ONE DAY AND WOULDN'T LET ME LEAVE.
WHEN THEY FINALLY DID, THE WORLD HAD ENDED.



CAT FRENZY



ONE-SHOT

YOU MAY DEAL EXACTLY X TARGETS 1 IRREDUCIBLE DAMAGE, WHERE X IS THE NUMBER OF [CAT] CARDS BENEATH YOUR CHARACTER CARD. THE TYPE OF DAMAGE MAY BE SELECTED FOR EACH TARGET AND MUST MATCH THE TYPE OF A [CAT] CARD BENEATH YOUR CHARACTER CARD.

SOMETIMES THEY JUST GO BAT SHIT CRAZY.
I JUST STAY OUT OF THEIR WAY.



CAT FRENZY



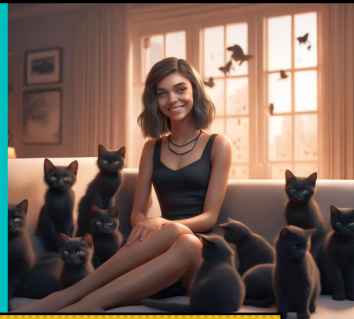
ONE-SHOT

YOU MAY DEAL EXACTLY X TARGETS 1 IRREDUCIBLE DAMAGE, WHERE X IS THE NUMBER OF [CAT] CARDS BENEATH YOUR CHARACTER CARD. THE TYPE OF DAMAGE MAY BE SELECTED FOR EACH TARGET AND MUST MATCH THE TYPE OF A [CAT] CARD BENEATH YOUR CHARACTER CARD.

SOMETIMES THEY JUST GO BAT SHIT CRAZY.
I JUST STAY OUT OF THEIR WAY.



CAT FRENZY



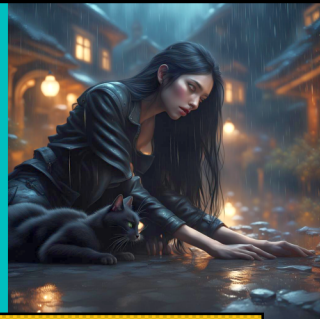
ONE-SHOT

YOU MAY DEAL EXACTLY x TARGETS 1 IRREDUCIBLE DAMAGE, WHERE x IS THE NUMBER OF [CAT] CARDS BENEATH YOUR CHARACTER CARD. THE TYPE OF DAMAGE MAY BE SELECTED FOR EACH TARGET AND MUST MATCH THE TYPE OF A [CAT] CARD BENEATH YOUR CHARACTER CARD.

SOMETIMES THEY JUST GO BAT SHIT CRAZY.
I JUST STAY OUT OF THEIR WAY.



SNUGGLE



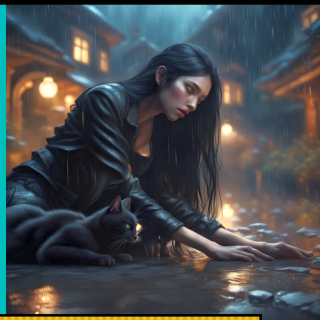
ONE-SHOT

YOU MAY MOVE UP TO 3 [CAT] CARDS FROM BENEATH YOUR CHARACTER CARD TO THE TOP OF YOUR DECK. ZENOBIA REGAINS x HP, WHERE x EQUALS THE NUMBER OF CARDS MOVED THIS WAY. SHUFFLE YOUR DECK.

THE ENERGY THAT FUELS THEIR LIFEFORCE IS ALL AROUND US.
IF YOU KNOW WHERE TO LOOK FOR IT.



SNUGGLE



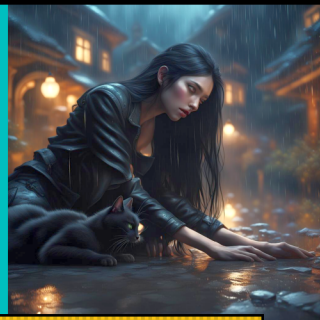
ONE-SHOT

YOU MAY MOVE UP TO 3 [CAT] CARDS FROM BENEATH YOUR CHARACTER CARD TO THE TOP OF YOUR DECK. ZENOBIA REGAINS x HP, WHERE x EQUALS THE NUMBER OF CARDS MOVED THIS WAY. SHUFFLE YOUR DECK.

THE ENERGY THAT FUELS THEIR LIFEFORCE IS ALL AROUND US.
IF YOU KNOW WHERE TO LOOK FOR IT.



SNUGGLE



ONE-SHOT

YOU MAY MOVE UP TO 3 [CAT] CARDS FROM BENEATH YOUR CHARACTER CARD TO THE TOP OF YOUR DECK. ZENOBIA REGAINS x HP, WHERE x EQUALS THE NUMBER OF CARDS MOVED THIS WAY. SHUFFLE YOUR DECK.

THE ENERGY THAT FUELS THEIR LIFEFORCE IS ALL AROUND US.
IF YOU KNOW WHERE TO LOOK FOR IT.



