



Pantheon (Heroic Ennead; designed specifically for Ra et al.'s battle against OblivAeon) at 30dpi, these cards print at the proper size for GBC 56005 (ID Badge) laminating sheets

CHANGE OF HEART



ONE-SHOT, BASIC

THE PANTHEON REGAINS 3 HP.
YOU MAY FLIP YOUR ♀ DEMIGOD.

"WE'RE NOT CHILDREN, FIGHTING
OVER OLD GRUDGES AND PRIDE.
WE'RE **GODS**. LET'S ACT LIKE IT!"
-RA, GODFALL #1

THE PANTHEON



CHANGE OF HEART



ONE-SHOT, BASIC

THE PANTHEON REGAINS 3 HP.
YOU MAY FLIP YOUR ♀ DEMIGOD.

"WE'RE NOT CHILDREN, FIGHTING
OVER OLD GRUDGES AND PRIDE.
WE'RE **GODS**. LET'S ACT LIKE IT!"
-RA, GODFALL #1

THE PANTHEON



DIVINE MIGHT



ONE-SHOT, BASIC

REVEAL CARDS FROM THE TOP OF YOUR
DECK UNTIL YOU REVEAL THREE CARDS THAT
ARE NOT BASIC. DRAW THESE CARDS AND
DISCARD THE REST.
YOU MAY FLIP YOUR ♀ DEMIGOD.

"THE POWER OF THE NILE FLOWS
THROUGH US! WE ARE UNSTOPPABLE!"
-ISIS, GODFALL #3

THE PANTHEON



DIVINE MIGHT



ONE-SHOT, BASIC

REVEAL CARDS FROM THE TOP OF YOUR
DECK UNTIL YOU REVEAL THREE CARDS THAT
ARE NOT BASIC. DRAW THESE CARDS AND
DISCARD THE REST.
YOU MAY FLIP YOUR ♀ DEMIGOD.

"THE POWER OF THE NILE FLOWS
THROUGH US! WE ARE UNSTOPPABLE!"
-ISIS, GODFALL #3

THE PANTHEON



GIFT OF THE GODS



ONE-SHOT, BASIC

THE PANTHEON DEALS ANOTHER HERO 2 IRREDUCIBLE TOXIC DAMAGE. IF THEY ARE DEALT DAMAGE THIS WAY, THEY MAY EITHER USE A POWER OR PLAY A ONE-SHOT. YOU MAY FLIP YOUR ☼ DEMIGOD.

"DRINK OF OUR BLOOD AND GAIN A FRACTION OF OUR POWERS, IF NOT OUR LIFESPAN..."
OSIRIS - GODFALL #2

THE PANTHEON



GIFT OF THE GODS



ONE-SHOT, BASIC

THE PANTHEON DEALS ANOTHER HERO 2 IRREDUCIBLE TOXIC DAMAGE. IF THEY ARE DEALT DAMAGE THIS WAY, THEY MAY EITHER USE A POWER OR PLAY A ONE-SHOT. YOU MAY FLIP YOUR ☼ DEMIGOD.

"DRINK OF OUR BLOOD AND GAIN A FRACTION OF OUR POWERS, IF NOT OUR LIFESPAN..."
OSIRIS - GODFALL #2

THE PANTHEON



ANCIENT MEMORIES



ONE-SHOT, BASIC

TAKE A ONE-SHOT FROM YOUR TRASH AND PUT IT IN YOUR HAND.
ANOTHER HERO TAKES A ONE-SHOT FROM THEIR TRASH AND PUTS IT IN THEIR HAND.
YOU MAY FLIP YOUR ☼ DEMIGOD.

THE RELICS OF THE ENNEAD CARRY MORE THAN JUST POWER. THEY HOLD THE MEMORIES, THE GRUDGES AND ULTIMATELY THE NOBILITY OF THESE ANCIENT GODS.

THE PANTHEON



ANCIENT MEMORIES



ONE-SHOT, BASIC

TAKE A ONE-SHOT FROM YOUR TRASH AND PUT IT IN YOUR HAND.
ANOTHER HERO TAKES A ONE-SHOT FROM THEIR TRASH AND PUTS IT IN THEIR HAND.
YOU MAY FLIP YOUR ☼ DEMIGOD.

THE RELICS OF THE ENNEAD CARRY MORE THAN JUST POWER. THEY HOLD THE MEMORIES, THE GRUDGES AND ULTIMATELY THE NOBILITY OF THESE ANCIENT GODS.

THE PANTHEON



SECRETS OF THE SHRINE



ONE-SHOT, BASIC

SEARCH YOUR DECK OR TRASH FOR A RELIC CARD AND PUT IT INTO PLAY.
YOU MAY DRAW A CARD.

RODERICK WARD'S TEAM ENTERED THE SAHARA IN SEARCH OF FAME AND RICHES, BUT IN A FORGOTTEN TEMPLE, BURIED BY THE SANDS THEY INSTEAD FOUND THE POWER OF THE GODS...

THE PANTHEON



SECRETS OF THE SHRINE



ONE-SHOT, BASIC

SEARCH YOUR DECK OR TRASH FOR A RELIC CARD AND PUT IT INTO PLAY.
YOU MAY DRAW A CARD.

RODERICK WARD'S TEAM ENTERED THE SAHARA IN SEARCH OF FAME AND RICHES, BUT IN A FORGOTTEN TEMPLE, BURIED BY THE SANDS THEY INSTEAD FOUND THE POWER OF THE GODS...

THE PANTHEON



SECRETS OF THE SHRINE



ONE-SHOT, BASIC

SEARCH YOUR DECK OR TRASH FOR A RELIC CARD AND PUT IT INTO PLAY.
YOU MAY DRAW A CARD.

RODERICK WARD'S TEAM ENTERED THE SAHARA IN SEARCH OF FAME AND RICHES, BUT IN A FORGOTTEN TEMPLE, BURIED BY THE SANDS THEY INSTEAD FOUND THE POWER OF THE GODS...

THE PANTHEON



SECRETS OF THE SHRINE



ONE-SHOT, BASIC

SEARCH YOUR DECK OR TRASH FOR A RELIC CARD AND PUT IT INTO PLAY.
YOU MAY DRAW A CARD.

RODERICK WARD'S TEAM ENTERED THE SAHARA IN SEARCH OF FAME AND RICHES, BUT IN A FORGOTTEN TEMPLE, BURIED BY THE SANDS THEY INSTEAD FOUND THE POWER OF THE GODS...

THE PANTHEON





SCULPT THE SANDS



GOLEM, ATUM

IF ATUM IS EMPOWERED WHEN YOU PLAY THIS FLIP HIM AND ★ = 8. OTHERWISE ★ = 4.

WHEN DAMAGE WOULD BE DEALT TO THE PANTHEON, REDIRECT IT TO THIS TARGET. AT THE START OF YOUR TURN, THIS DEALS A TARGET X MELEE DAMAGE, WHERE X IS HALF ITS HP ROUNDING DOWN.

"NO HARD FEELINGS, MY LARGE SANDY FRIEND. LET'S SHAKE ON IT."

-LEGACY, GODFALL #3.

THE PANTHEON



SCULPT THE SANDS



GOLEM, ATUM

IF ATUM IS EMPOWERED WHEN YOU PLAY THIS FLIP HIM AND ★ = 8. OTHERWISE ★ = 4.

WHEN DAMAGE WOULD BE DEALT TO THE PANTHEON, REDIRECT IT TO THIS TARGET. AT THE START OF YOUR TURN, THIS DEALS A TARGET X MELEE DAMAGE, WHERE X IS HALF ITS HP ROUNDING DOWN.

"NO HARD FEELINGS, MY LARGE SANDY FRIEND. LET'S SHAKE ON IT."

-LEGACY, GODFALL #3.

THE PANTHEON



SIGN OF THE SUN



ONE-SHOT, ATUM

IF ATUM IS EMPOWERED, ONE HERO
DRAWS 2 CARDS.

THEN YOU MAY PLAY A CARD.

"GLORY TO ATUM, THE SELF MADE,
HE WHO BRED WITH HIS OWN SHADOW TO
MAKE THE EARTH AND SKIES..."

-INSCRIPTION, SHRINE OF THE ENNEAD.

THE PANTHEON



SIGN OF THE SUN



ONE-SHOT, ATUM

IF ATUM IS EMPOWERED, ONE HERO
DRAWS 2 CARDS.

THEN YOU MAY PLAY A CARD.

"GLORY TO ATUM, THE SELF MADE,
HE WHO BRED WITH HIS OWN SHADOW TO
MAKE THE EARTH AND SKIES..."

-INSCRIPTION, SHRINE OF THE ENNEAD

THE PANTHEON





DEMIGOD



DEMIGOD, EMPOWERED

SEISMIC SHOCK
EMPOWERED: THE PANTHEON DEALS UP TO 2 TARGETS 2 PROJECTILE DAMAGE EACH. THEN FLIP GEB.

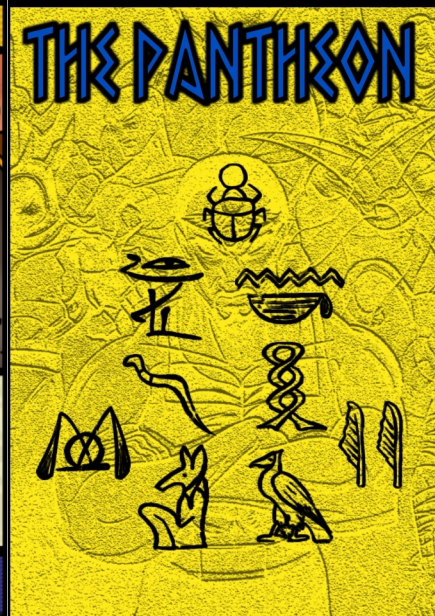


THE SERPENT CROWN

EQUIPMENT, RELIC, GEB

AT THE END OF YOUR TURN, THE PANTHEON DEALS EACH VILLAIN TARGET 1 PROJECTILE DAMAGE AND EACH ENVIRONMENT TARGET 3 PROJECTILE DAMAGE.

"ED GALLOWES, PROFESSIONAL MUSCLE. STRONG AS A BEAR AND SMART AS A BARNACLE."
 -THE WRATH'S CRIME FILES.



THE PANTHEON



TECTONIC SHIFT

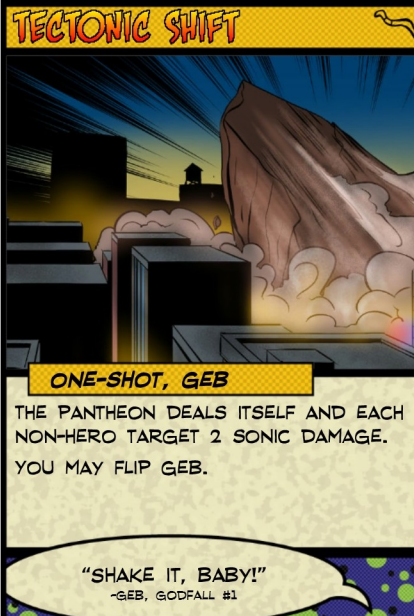
ONE-SHOT, GEB

THE PANTHEON DEALS ITSELF AND EACH NON-HERO TARGET 2 SONIC DAMAGE. YOU MAY FLIP GEB.

"SHAKE IT, BABY!"
 -GEB, GODFALL #1



THE PANTHEON

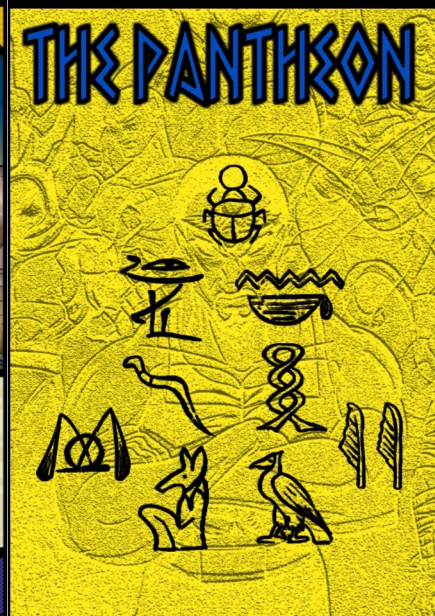


TECTONIC SHIFT

ONE-SHOT, GEB

THE PANTHEON DEALS ITSELF AND EACH NON-HERO TARGET 2 SONIC DAMAGE. YOU MAY FLIP GEB.

"SHAKE IT, BABY!"
 -GEB, GODFALL #1



THE PANTHEON

VOLCANIC COLLAPSE



ONE-SHOT, GEB

DESTROY AN ENVIRONMENT CARD.
IF GEB IS EMPOWERED, FLIP HIM AND
THE PANTHEON DEALS ONE TARGET 5
FIRE DAMAGE.

ATUM: "I SAID SMASH THE DOOR"
OSIRIS: "THE DOOR IS IN THE BANK, THE BANK IS
IN THE TOWN, AND THE TOWN IS UNDER THE LAVA.
LOGICALLY SPEAKING, HE SMASHED THE DOOR."
-GODFALL #2

THE PANTHEON



VOLCANIC COLLAPSE



ONE-SHOT, GEB

DESTROY AN ENVIRONMENT CARD.
IF GEB IS EMPOWERED, FLIP HIM AND
THE PANTHEON DEALS ONE TARGET 5
FIRE DAMAGE.

ATUM: "I SAID SMASH THE DOOR"
OSIRIS: "THE DOOR IS IN THE BANK, THE BANK IS
IN THE TOWN, AND THE TOWN IS UNDER THE LAVA.
LOGICALLY SPEAKING, HE SMASHED THE DOOR."
-GODFALL #2

THE PANTHEON



SIGN OF THE EARTH



ONE-SHOT, GEB

IF GEB IS EMPOWERED, DESTROY A
NON-TARGET ENVIRONMENT CARD.
THEN YOU MAY PLAY A CARD.

"GLORY TO GEB, THE SERPENT
OF THE EARTH, WHO MAKES THE SANDS
SHAKE WITH HIS PASSING..."
-INSCRIPTION, SHRINE OF THE ENNEAD.

THE PANTHEON



SIGN OF THE EARTH



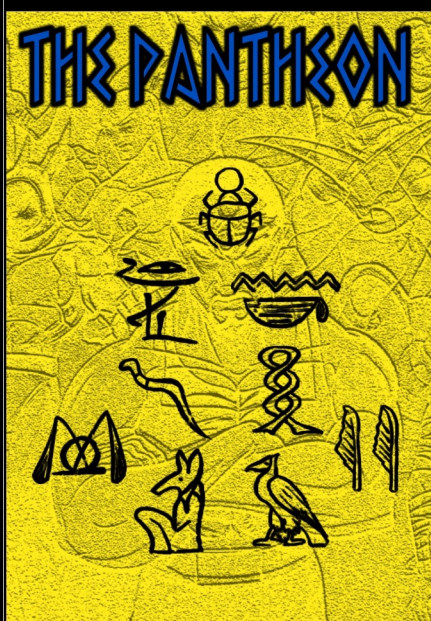
ONE-SHOT, GEB

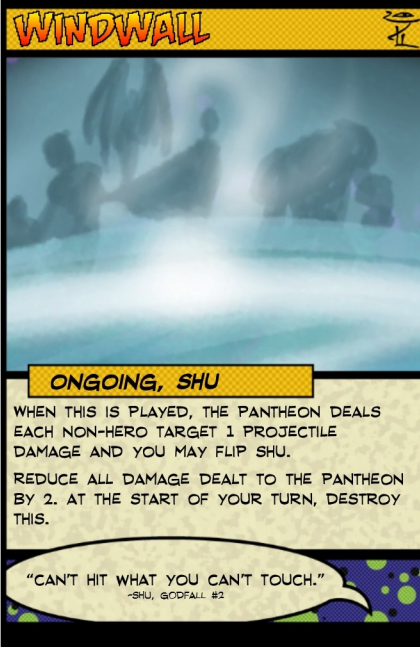
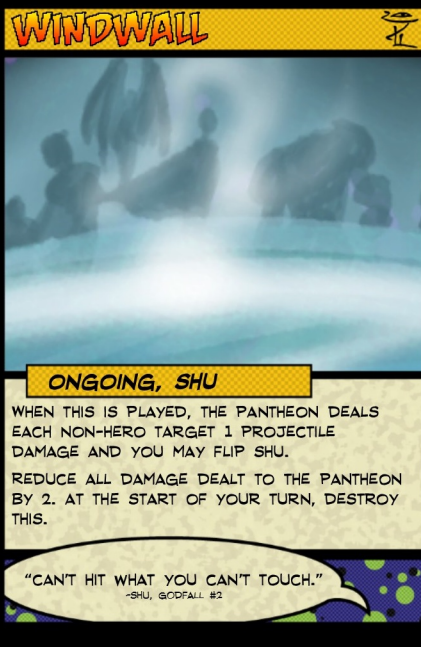
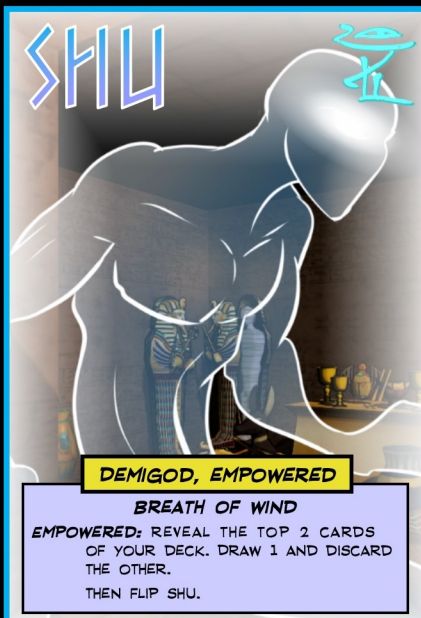
IF GEB IS EMPOWERED, DESTROY A
NON-TARGET ENVIRONMENT CARD.
THEN YOU MAY PLAY A CARD.

"GLORY TO GEB, THE SERPENT
OF THE EARTH, WHO MAKES THE SANDS
SHAKE WITH HIS PASSING..."
-INSCRIPTION, SHRINE OF THE ENNEAD.

THE PANTHEON







GALEGRACE

SHU

**ONE-SHOT, SHU**

YOU MAY PLAY UP TO TWO CARDS.
IF SHU IS EMPOWERED, FLIP HIM AND
YOU MAY PLAY A THIRD CARD.

"WHEN I WAS A MAN, THEY SAID
I WAS QUICK AS THE WIND.
NOW I **AM** THE WIND."

-SHU, GODFALL #3.

THE PANTHEON

GALEGRACE

SHU

**ONE-SHOT, SHU**

YOU MAY PLAY UP TO TWO CARDS.
IF SHU IS EMPOWERED, FLIP HIM AND
YOU MAY PLAY A THIRD CARD.

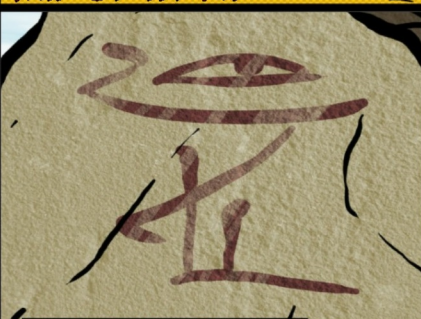
"WHEN I WAS A MAN, THEY SAID
I WAS QUICK AS THE WIND.
NOW I **AM** THE WIND."

-SHU, GODFALL #3.

THE PANTHEON

SIGN OF THE AIR

SHU

**ONE-SHOT, SHU**

IF SHU IS EMPOWERED, YOU MAY FLIP A
DEMIGOD.
THEN YOU MAY PLAY A CARD.

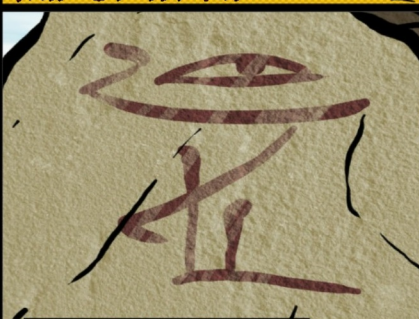
"GLORY TO SHU, SOUL OF THE
WIND, HE WHO GIVES THE BREATH OF
LIFE AND QUICKENS THE HEART..."

-INSCRIPTION, SHRINE OF THE ENNEAD.

THE PANTHEON

SIGN OF THE AIR

SHU

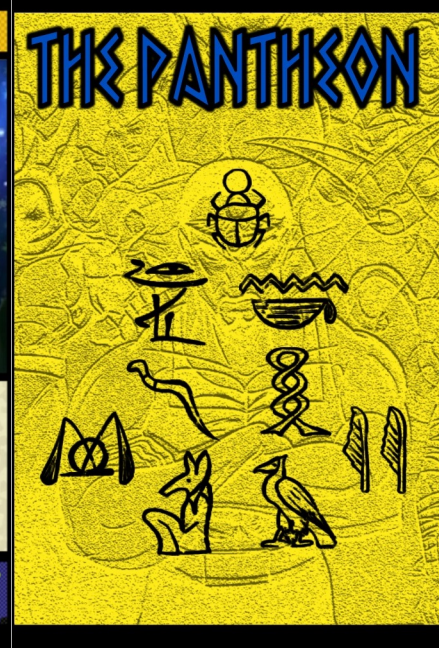
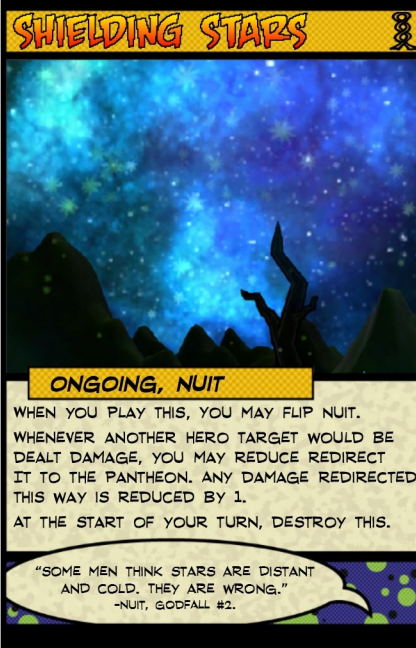
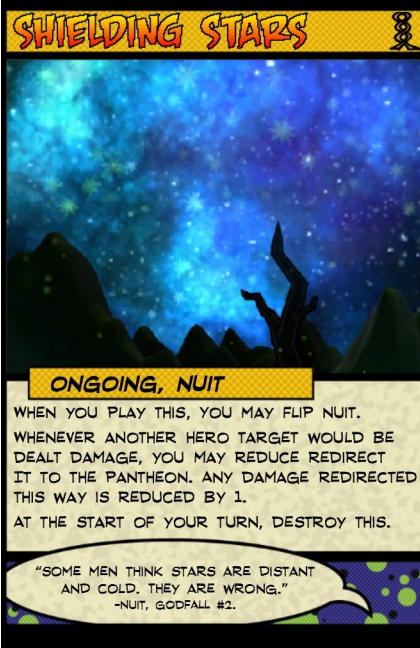
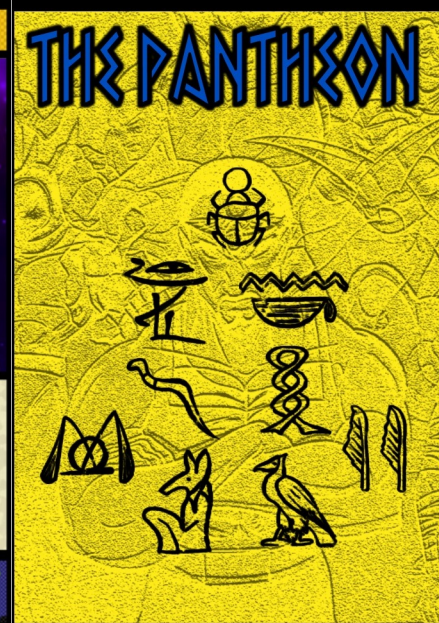
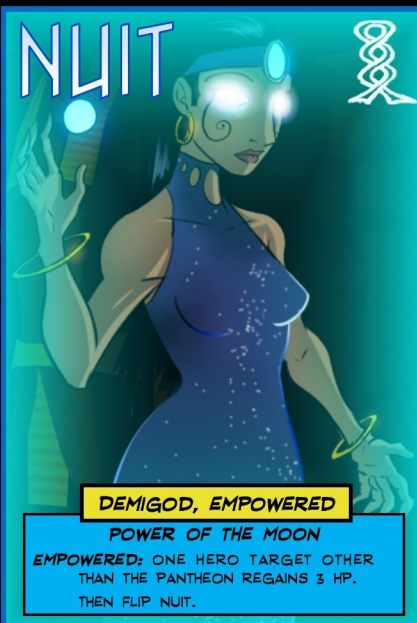
**ONE-SHOT, SHU**

IF SHU IS EMPOWERED, YOU MAY FLIP A
DEMIGOD.
THEN YOU MAY PLAY A CARD.

"GLORY TO SHU, SOUL OF THE
WIND, HE WHO GIVES THE BREATH OF
LIFE AND QUICKENS THE HEART..."

-INSCRIPTION, SHRINE OF THE ENNEAD.

THE PANTHEON



HEALING LIGHT



ONE-SHOT, NUIT

EACH HERO TARGET REGAINS 2 HP.
IF NUIT IS EMPOWERED, FLIP HER AND
REDUCE THE DAMAGE DONE TO ALL
HERO TARGETS BY 1 UNTIL THE START
OF YOUR NEXT TURN.

"BEHOLD THE LIGHT OF THE WORLD!"
-NUIT, GODFALL #1.

THE PANTHEON



HEALING LIGHT



ONE-SHOT, NUIT

EACH HERO TARGET REGAINS 2 HP.
IF NUIT IS EMPOWERED, FLIP HER AND
REDUCE THE DAMAGE DONE TO ALL
HERO TARGETS BY 1 UNTIL THE START
OF YOUR NEXT TURN.

"BEHOLD THE LIGHT OF THE WORLD!"
-NUIT, GODFALL #1.

THE PANTHEON



SIGN OF THE STARS



ONE-SHOT, NUIT

IF NUIT IS EMPOWERED, EACH HERO
TARGET REGAINS 1 HP.
THEN YOU MAY PLAY A CARD.

"GLORY TO NUIT, WRAPPED IN THE NIGHT
SKY. SHE IS THE LIGHT AND THE LIFE."
-INSCRIPTION, SHRINE OF THE ENNEAD.

THE PANTHEON



SIGN OF THE STARS



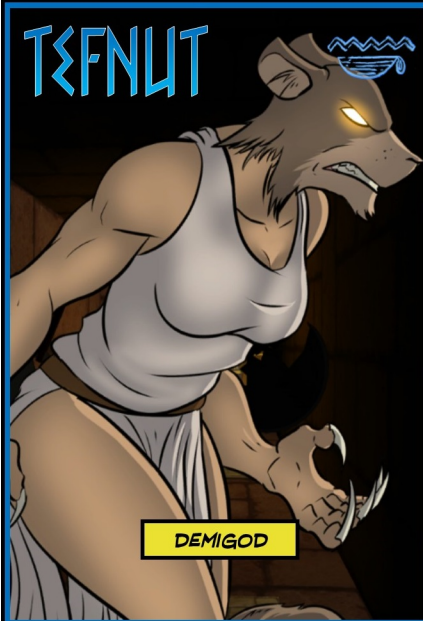
ONE-SHOT, NUIT

IF NUIT IS EMPOWERED, EACH HERO
TARGET REGAINS 1 HP.
THEN YOU MAY PLAY A CARD.

"GLORY TO NUIT, WRAPPED IN THE NIGHT
SKY. SHE IS THE LIGHT AND THE LIFE."
-INSCRIPTION, SHRINE OF THE ENNEAD.

THE PANTHEON





TEFNUT

DEMIGOD



TEFNUT

DEMIGOD, EMPOWERED

RAZOR ASSAULT

EMPOWERED: THE PANTHEON DEALS ONE TARGET 1 MELEE DAMAGE. THEN THEY DEAL ONE TARGET 1 MELEE DAMAGE. THEN FLIP TEFNUT.



NILOTIC BRACERS

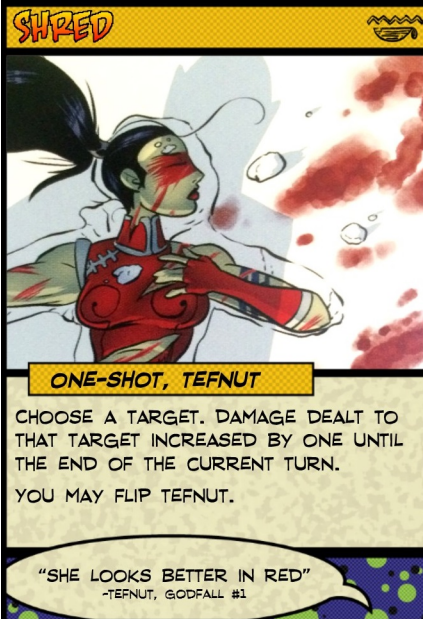
EQUIPMENT, RELIC, TEFNUT

INCREASE MELEE DAMAGE DEALT BY THE PANTHEON BY 1.

"SARA BLACKMORE, EXPLORER & BIG GAME HUNTER. KILLED AND SKINNED A HIPPO WITH JUST HER SWISS ARMY KNIFE"
-THE WRATH'S CRIME FILES.



THE PANTHEON



SHRED

ONE-SHOT, TEFNUT

CHOOSE A TARGET. DAMAGE DEALT TO THAT TARGET INCREASED BY ONE UNTIL THE END OF THE CURRENT TURN. YOU MAY FLIP TEFNUT.

"SHE LOOKS BETTER IN RED"
-TEFNUT, GODFALL #1



THE PANTHEON



SHRED

ONE-SHOT, TEFNUT

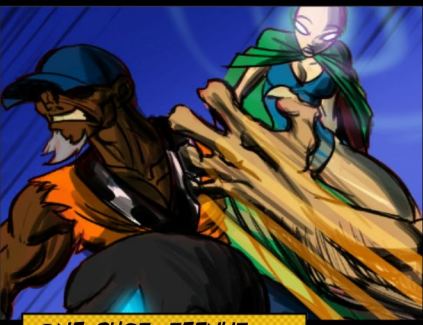
CHOOSE A TARGET. DAMAGE DEALT TO THAT TARGET INCREASED BY ONE UNTIL THE END OF THE CURRENT TURN. YOU MAY FLIP TEFNUT.

"SHE LOOKS BETTER IN RED"
-TEFNUT, GODFALL #1



THE PANTHEON

REND AND TEAR



ONE-SHOT, TEFNUT

THE PANTHEON DEALS ONE TARGET 4
MELEE DAMAGE.

IF TEFNUT IS EMPOWERED, FLIP HER AND THE PANTHEON MAY DEAL A SECOND TARGET 3 MELEE DAMAGE AND MAY DEAL A THIRD TARGET 2 MELEE DAMAGE.

VISIONARY: "I'M GLAD SHE'S ON OUR SIDE"
ABSOLUTE ZERO: "INDEED. I LIKE MY BLOOD
 ON THE INSIDE FOR A CHANGE."
 -GODFALL #2

NEPTHYΣ



DEMIGOD

NEPTHYΣ



DEMIGOD, EMPOWERED

ESSENCE DRAIN

EMPOWERED: THE PANTHEON DEALS ONE TARGET 2 IRREDUCIBLE FIRE DAMAGE, THEN REGAINS 1 HP.
THEN FLIP NEPHTHYS.

ASHEN WRAPPINGS



EQUIPMENT, RELIC, NEPHTHYS

THE FIRST TIME EACH TURN THE PANTHEON DEALS A TARGET DAMAGE, THE PANTHEON REGAINS 2 HP.

"RACHEL LACROIX, DECORATED COMBAT
SURGEON. COURT MARTIALED FOR ADDICTION
TO OPIATES, TRANQUILIZERS AND DRY REDS."
-THE WRATH'S CRIME FILES.

THE PANTHEON



REQUIEM



ONE-SHOT, NEPTHYS

THE PANTHEON DEALS ANY NUMBER OF HERO
TARGETS 1 IRREDUCIBLE FIRE DAMAGE EACH. X IS
THE TOTAL AMOUNT OF DAMAGE DEALT THIS WAY.

THEN THE PANTHEON DEALS ONE TARGET $X+1$ RADIANT DAMAGE.

YOU MAY FLIP NEPTHYS.

NEPHTHYS: "GRANT ME A SLIVER OF YOUR SOUL, AND OUR PROBLEMS WILL BE OVER."

HAKA: "IT'LL GROW BACK, RIGHT?"
- GODEFALL #3

THE PANTHEON



REQUIEM



ONE-SHOT, NEPHTHYS

THE PANTHEON DEALS ANY NUMBER OF HERO
TARGETS 1 IRREDUCIBLE FIRE DAMAGE EACH. X IS
THE TOTAL AMOUNT OF DAMAGE DEALT THIS WAY.

THEN THE PANTHEON DEALS ONE TARGET $X+1$ RADIANT DAMAGE.

YOU MAY FLIP NEPTHYS.

NEPHTHYS: "GRANT ME A SLIVER OF YOUR SOUL, AND OUR PROBLEMS WILL BE OVER."

HAKA: "IT'LL GROW BACK, RIGHT?"
- GODFALL #3

THE PANTHEON



DUST TO DUST



ONE-SHOT, NEPTHYS

THE PANTHEON DEALS ONE TARGET 2
IRREDUCIBLE FIRE DAMAGE. IF NEPHTHS
IS EMPOWERED, FLIP HER AND INCREASE
THE DAMAGE BY 2.

THE PANTHEON GAINS HP EQUAL TO THE AMOUNT OF DAMAGE DEALT THIS WAY.

"IT'S SORT OF LIKE AN ORGAN TRANSPLANT, ONLY THE DONOR'S NOT DEAD. WELL, NOT TO START WITH, ANYWAY."

-NEPTHYS. GORFALL #2

THE PANTHEON



DUST TO DUST



ONE-SHOT, NEPHTHYS

THE PANTHEON DEALS ONE TARGET 2
IRREDUCIBLE FIRE DAMAGE. IF NEPHTYS
IS EMPOWERED, FLIP HER AND INCREASE
THE DAMAGE BY 2.

THE PANTHEON GAINS HP EQUAL TO THE AMOUNT OF DAMAGE DEALT THIS WAY.

"IT'S SORT OF LIKE AN ORGAN TRANSPLANT, ONLY THE DONOR'S NOT DEAD. WELL, NOT TO START WITH, ANYWAY."

-NEPTHYS. GODEFALL #2

THE PANTHEON



SIGN OF DEATH



ONE-SHOT, NEPTHYS

IF NEPHTHYS IS EMPOWERED, DESTROY A
TARGET WITH 3 OR LESS HP.
THEN YOU MAY PLAY A CARD.

"GLORY TO NEPHTHYS, THE KEEPER
OF THE CRYPT, SHE WHO ENDS THE
SUFFERING AND BRINGS PEACE..."

INSCRIPTION, SHRINE OF THE ENNEAD.

THE PANTHEON



SIGN OF DEATH



ONE-SHOT, NEPTHYS

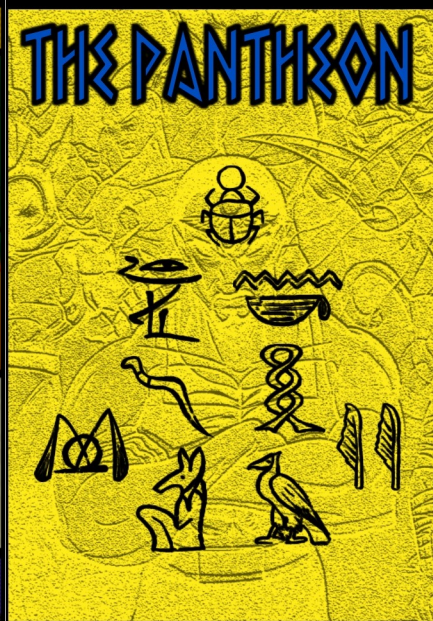
IF NEPHTHYS IS EMPOWERED, DESTROY A
TARGET WITH 3 OR LESS HP.
THEN YOU MAY PLAY A CARD.

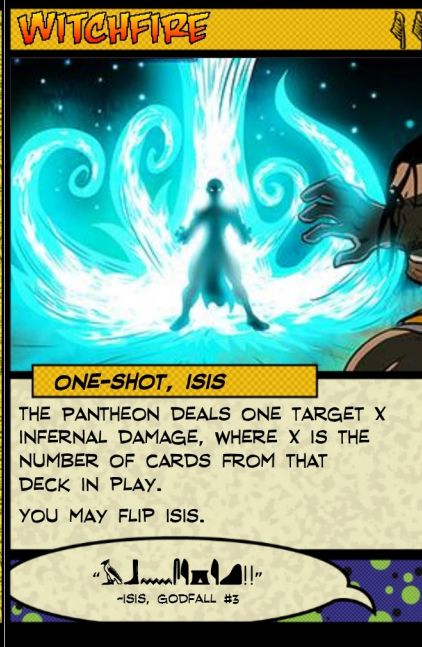
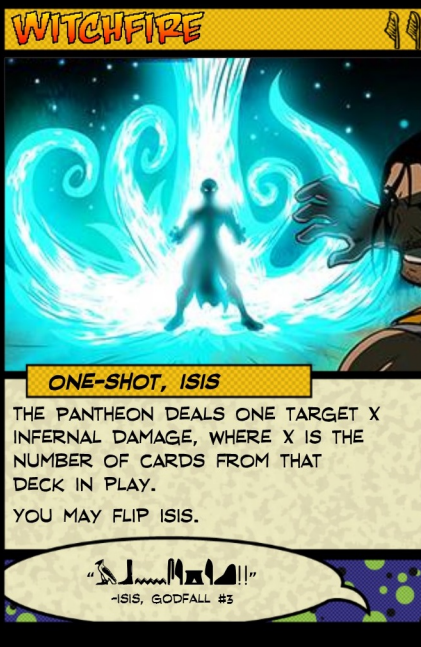
"GLORY TO NEPHTHYS, THE KEEPER
OF THE CRYPT, SHE WHO ENDS THE
SUFFERING AND BRINGS PEACE..."

-INSCRIPTION, SHRINE OF THE ENNEAD

THE PANTHEON







ANCIENT CURSE



ONGOING, ISIS

PLAY THIS BY A TARGET. IF ISIS IS EMPOWERED
FLIP HER AND INCREASE DAMAGE DEALT TO THE
TARGET THIS CARD IS NEXT TO BY 1.

AT THE START OF YOUR TURN, THE PANTHEON DEALS 5 INFERNAL DAMAGE TO THE TARGET THIS CARD IS NEXT TO, THEN DESTROY THIS.

"I CALL ON EVERY GOD THAT WALKS
THE EARTH OR CRAWLS BENEATH!"

-ISIS, GODFALL #2.

THE PANTHEON



ANCIENT CURSE



ONGOING, ISIS

PLAY THIS BY A TARGET. IF ISIS IS EMPOWERED
FLIP HER AND INCREASE DAMAGE DEALT TO THE
TARGET THIS CARD IS NEXT TO BY 1.

AT THE START OF YOUR TURN, THE PANTHEON
DEALS 5 INFERNAL DAMAGE TO THE TARGET THIS
CARD IS NEXT TO, THEN DESTROY THIS.

"I CALL ON EVERY GOD THAT WALKS
THE EARTH OR CRAWLS BENEATH!"

-ISIS, GODFALL #2

THE PANTHEON



SIGN OF SORCERY



ONE-SHOT, ISIS

IF ISIS IS EMPOWERED, DESTROY
ONE HERO ONGOING AND ONE VILLAIN
ONGOING.

THEN YOU MAY PLAY A CARD.

"GLORY TO ISIS, THE MATRIARCH
OF MAGIC, SHE WHO KNOWS THE HIDDEN
GATES AND SECRET WAYS..."

-INSCRIPTION, SHRINE OF THE ENNEAD.

THE PANTHEON



SIGN OF SORCERY



ONE-SHOT, ISIS

IF ISIS IS EMPOWERED, DESTROY
ONE HERO ONGOING AND ONE VILLAIN
ONGOING.

THEN YOU MAY PLAY A CARD.

"GLORY TO ISIS, THE MATRIARCH
OF MAGIC, SHE WHO KNOWS THE HIDDEN
GATES AND SECRET WAYS..."

-INSCRIPTION, SHRINE OF THE ENNEAD

THE PANTHEON

