

BETSY

EQUIPMENT

WHEN THIS CARD ENTERS PLAY, IF IT WAS NOT PLAYED FROM YOUR HAND, CHARADE DEALS ONE TARGET 2 IRREDUCIBLE PSYCHIC DAMAGE.

POWER: CHARADE DEALS ONE TARGET 3 PROJECTILE DAMAGE.

JASON: "LYCIA, WHAT ARE YOU DOING WITH RUSTY'S SHOTGUN?"
 ALCIA: "BETSY AND I GOING TO GO INTRODUCE OURSELVES TO OUR UNWANTED GUESTS."
 - HALCYON NIGHTS ONE-SHOT

ART BY MIKE WILLIAMS

Menagerie
OF THE
MULTIVERSE

CHARADE

DV-64 SCION

EQUIPMENT

WHEN THIS CARD ENTERS PLAY, IF IT WAS NOT PLAYED FROM YOUR HAND, CHARADE DEALS EACH NON-HERO TARGET 1 PROJECTILE DAMAGE.

POWER: CHARADE DEALS UP TO TWO TARGETS 2 PROJECTILE DAMAGE EACH.

"THE DV-64: OUR STANDARD SIDEARM. I'M SURE YOU'RE FAMILIAR WITH IT AND WILL WANT TO MAKE YOUR OWN MODIFICATIONS."
 - AGENT PARKER, MENAGERIE SECRET ORIGINS #13

ART BY MIKE WILLIAMS

Menagerie
OF THE
MULTIVERSE

CHARADE

DV-64 SCION

EQUIPMENT

WHEN THIS CARD ENTERS PLAY, IF IT WAS NOT PLAYED FROM YOUR HAND, CHARADE DEALS EACH NON-HERO TARGET 1 PROJECTILE DAMAGE.

POWER: CHARADE DEALS UP TO TWO TARGETS 2 PROJECTILE DAMAGE EACH.

"THE DV-64: OUR STANDARD SIDEARM. I'M SURE YOU'RE FAMILIAR WITH IT AND WILL WANT TO MAKE YOUR OWN MODIFICATIONS."
 - AGENT PARKER, MENAGERIE SECRET ORIGINS #13

ART BY MIKE WILLIAMS

Menagerie
OF THE
MULTIVERSE

CHARADE

DV-64 SCION

EQUIPMENT

WHEN THIS CARD ENTERS PLAY, IF IT WAS NOT PLAYED FROM YOUR HAND, CHARADE DEALS EACH NON-HERO TARGET 1 PROJECTILE DAMAGE.

POWER: CHARADE DEALS UP TO TWO TARGETS 2 PROJECTILE DAMAGE EACH.

"THE DV-64: OUR STANDARD SIDEARM. I'M SURE YOU'RE FAMILIAR WITH IT AND WILL WANT TO MAKE YOUR OWN MODIFICATIONS."
 - AGENT PARKER, MENAGERIE SECRET ORIGINS #13

ART BY MIKE WILLIAMS

Menagerie
OF THE
MULTIVERSE

CHARADE

Insomn (Mike Williams) – Menagerie of the Multiverse – Hero Deck: Charade

EMPTY THE MAGAZINE



ONE-SHOT

DISCARD ANY NUMBER OF CARDS FROM UNDER YOUR CHARACTER CARD.

CHARADE DEALS ONE TARGET X PROJECTILE DAMAGE, WHERE X IS 3 PLUS THE NUMBER OF CARDS DISCARDED THIS WAY.

DRAW A CARD.

AGENT PARKER: "YOU SHOT AT ME?!"
CHARADE: "I SHOUTED 'DOWN RANGE' FIRST."
- THE MENAGERIE ANNUAL #2

ART BY MIKE WILLIAMS

menagerie
OF THE
MULTIVERSE



CHARADE

EMPTY THE MAGAZINE



ONE-SHOT

DISCARD ANY NUMBER OF CARDS FROM UNDER YOUR CHARACTER CARD.

CHARADE DEALS ONE TARGET X PROJECTILE DAMAGE, WHERE X IS 3 PLUS THE NUMBER OF CARDS DISCARDED THIS WAY.

DRAW A CARD.

AGENT PARKER: "YOU SHOT AT ME?!"
CHARADE: "I SHOUTED 'DOWN RANGE' FIRST."
- THE MENAGERIE ANNUAL #2

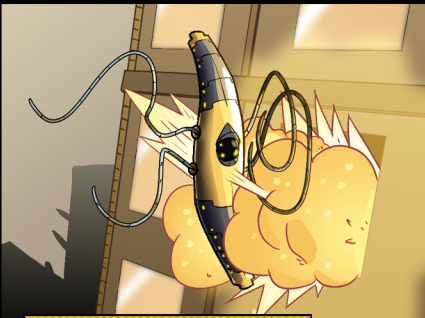
ART BY MIKE WILLIAMS

menagerie
OF THE
MULTIVERSE



CHARADE

EXPLOSIVE SABOTAGE



ONE-SHOT

WHEN THIS CARD ENTERS PLAY, IF IT WAS NOT PLAYED FROM YOUR HAND, CHARADE DEALS UP TO TWO TARGETS 2 FIRE DAMAGE EACH.

DESTROY AN ONGOING OR ENVIRONMENT CARD.

"ERROR -- UNEXPECTED EXPLOSIVE
ORDNANCE DETECTED."
- CLOCKWORK RECON DRONE, THE MENAGERIE #45

ART BY MIKE WILLIAMS

menagerie
OF THE
MULTIVERSE



CHARADE

EXPLOSIVE SABOTAGE



ONE-SHOT

WHEN THIS CARD ENTERS PLAY, IF IT WAS NOT PLAYED FROM YOUR HAND, CHARADE DEALS UP TO TWO TARGETS 2 FIRE DAMAGE EACH.

DESTROY AN ONGOING OR ENVIRONMENT CARD.

"ERROR -- UNEXPECTED EXPLOSIVE
ORDNANCE DETECTED."
- CLOCKWORK RECON DRONE, THE MENAGERIE #45

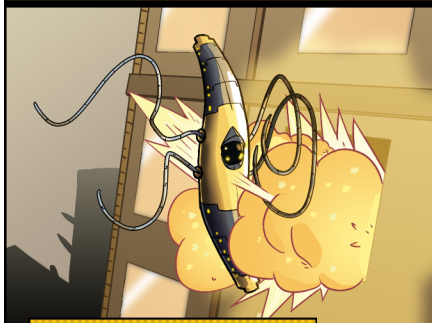
ART BY MIKE WILLIAMS

menagerie
OF THE
MULTIVERSE



CHARADE

EXPLOSIVE SABOTAGE



ONE-SHOT

WHEN THIS CARD ENTERS PLAY, IF IT WAS NOT PLAYED FROM YOUR HAND, CHARADE DEALS UP TO TWO TARGETS 2 FIRE DAMAGE EACH.

DESTROY AN ONGOING OR ENVIRONMENT CARD.

"ERROR -- UNEXPECTED EXPLOSIVE ORDNANCE DETECTED."
- CLOCKWORK RECON DRONE, THE MENAGERIE #45

ART BY MIKE WILLIAMS

menagerie
OF THE
MULTIVERSE



CHARADE

GATHER INTEL



ONE-SHOT

PUT UP TO TWO CARDS FROM YOUR HAND UNDER YOUR CHARACTER CARD.

DRAW UNTIL YOU HAVE THREE CARDS IN HAND.

"ALYCIA CHIN? IN MY BUILDING?
WEARING MY COURIER COMPANY'S UNIFORM?
WHAT DO I PAY YOU PEOPLE FOR?!"
- REX TYRAN, TYRAN CORPORATE LADDER LIMITED SERIES

ART BY MIKE WILLIAMS

menagerie
OF THE
MULTIVERSE



CHARADE

GATHER INTEL



ONE-SHOT

PUT UP TO TWO CARDS FROM YOUR HAND UNDER YOUR CHARACTER CARD.

DRAW UNTIL YOU HAVE THREE CARDS IN HAND.

"ALYCIA CHIN? IN MY BUILDING?
WEARING MY COURIER COMPANY'S UNIFORM?
WHAT DO I PAY YOU PEOPLE FOR?!"
- REX TYRAN, TYRAN CORPORATE LADDER LIMITED SERIES

ART BY MIKE WILLIAMS

menagerie
OF THE
MULTIVERSE



CHARADE

GATHER INTEL



ONE-SHOT

PUT UP TO TWO CARDS FROM YOUR HAND UNDER YOUR CHARACTER CARD.

DRAW UNTIL YOU HAVE THREE CARDS IN HAND.

"ALYCIA CHIN? IN MY BUILDING?
WEARING MY COURIER COMPANY'S UNIFORM?
WHAT DO I PAY YOU PEOPLE FOR?!"
- REX TYRAN, TYRAN CORPORATE LADDER LIMITED SERIES

ART BY MIKE WILLIAMS

menagerie
OF THE
MULTIVERSE



CHARADE

GLORIOUS BATTLE



ONGOING, LIMITED

YOU MAY USE AN ADDITIONAL POWER DURING YOUR POWER PHASE.

GRASSCUTTER ONE: "YOU CANNOT WIN."
CHARADE: "I DON'T HAVE TO WIN, I JUST HAVE TO KEEP YOU FROM WINNING FOR FEW MORE MOMENTS."
- HALCYON NIGHTS ONE-SHOT

ART BY MIKE WILLIAMS

**MANAGERIE
OF THE
MULTIVERSE**



CHARADE

GLORIOUS BATTLE



ONGOING, LIMITED

YOU MAY USE AN ADDITIONAL POWER DURING YOUR POWER PHASE.

GRASSCUTTER ONE: "YOU CANNOT WIN."
CHARADE: "I DON'T HAVE TO WIN, I JUST HAVE TO KEEP YOU FROM WINNING FOR FEW MORE MOMENTS."
- HALCYON NIGHTS ONE-SHOT

ART BY MIKE WILLIAMS

**MANAGERIE
OF THE
MULTIVERSE**



CHARADE

GLORIOUS BATTLE



ONGOING, LIMITED

YOU MAY USE AN ADDITIONAL POWER DURING YOUR POWER PHASE.

GRASSCUTTER ONE: "YOU CANNOT WIN."
CHARADE: "I DON'T HAVE TO WIN, I JUST HAVE TO KEEP YOU FROM WINNING FOR FEW MORE MOMENTS."
- HALCYON NIGHTS ONE-SHOT

ART BY MIKE WILLIAMS

**MANAGERIE
OF THE
MULTIVERSE**



CHARADE

"HELLO, HERO"



ONE-SHOT

SELECT ANOTHER HERO.
IF YOU PLAYED THIS CARD FROM YOUR HAND, CHARADE DEALS THAT HERO 2 IRREDUCIBLE PSYCHIC DAMAGE.
THAT HERO'S PLAYER DRAWS A CARD THEN PLAYS A CARD OR USES A POWER.

"ALYCIA SUDDENLY APPEARING AND HARSHLY CRITIQUEING YOU BEFORE DISAPPEARING AGAIN JUST MEANS SHE'S WARMING UP TO YOU."
- JASON GULL, MANAGERIE SECRET ORIGINS #16

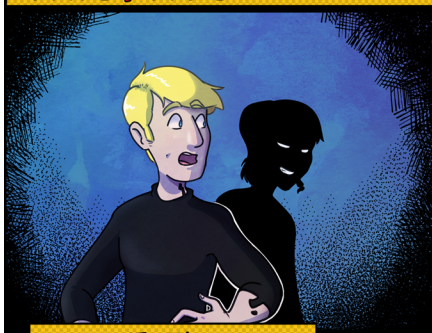
ART BY MIKE WILLIAMS

**MANAGERIE
OF THE
MULTIVERSE**



CHARADE

"HELLO, HERO"



ONE-SHOT

SELECT ANOTHER HERO.

IF YOU PLAYED THIS CARD FROM YOUR HAND, CHARADE DEALS THAT HERO 2 IRREDUCIBLE PSYCHIC DAMAGE.

THAT HERO'S PLAYER DRAWS A CARD THEN PLAYS A CARD OR USES A POWER.

"ALYCIA SUDDENLY APPEARING AND HARSHLY CRITIQUING YOU BEFORE DISAPPEARING. AGAIN JUST MEANS SHE'S WARMING UP TO YOU."
- JASON GULL, MENAGERIE SECRET ORIGINS #16

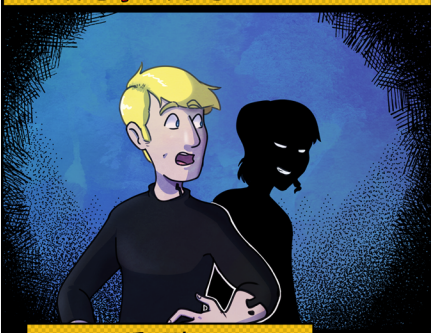
ART BY MIKE WILLIAMS

menagerie
OF THE
MULTIVERSE



CHARADE

"HELLO, HERO"



ONE-SHOT

SELECT ANOTHER HERO.

IF YOU PLAYED THIS CARD FROM YOUR HAND, CHARADE DEALS THAT HERO 2 IRREDUCIBLE PSYCHIC DAMAGE.

THAT HERO'S PLAYER DRAWS A CARD THEN PLAYS A CARD OR USES A POWER.

"ALYCIA SUDDENLY APPEARING AND HARSHLY CRITIQUING YOU BEFORE DISAPPEARING. AGAIN JUST MEANS SHE'S WARMING UP TO YOU."
- JASON GULL, MENAGERIE SECRET ORIGINS #16

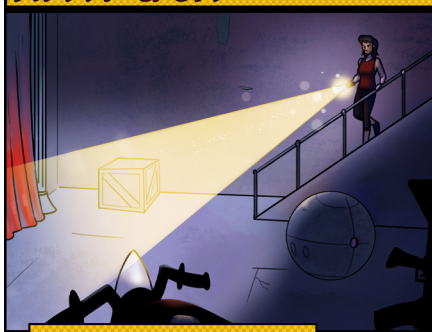
ART BY MIKE WILLIAMS

menagerie
OF THE
MULTIVERSE



CHARADE

HIDDEN CACHE



ONE-SHOT

REVEAL CARDS FROM THE TOP OF YOUR DECK UNTIL YOU REVEAL 2 EQUIPMENT CARDS. PUT ONE OF THEM EITHER INTO PLAY OR UNDER YOUR CHARACTER CARD.

SHUFFLE THE REST OF THE REVEALED CARDS INTO YOUR DECK.

RECORDING: "DAUGHTER, IF YOU ARE HEARING THIS. . ."
ALYCIA: "HOW MANY MORE TIMES MUST I HEAR THIS SPEECH, FATHER?"
- HEIR OF CHIN ONE-SHOT

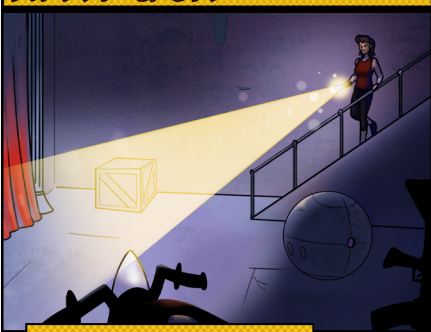
ART BY MIKE WILLIAMS

menagerie
OF THE
MULTIVERSE



CHARADE

HIDDEN CACHE



ONE-SHOT

REVEAL CARDS FROM THE TOP OF YOUR DECK UNTIL YOU REVEAL 2 EQUIPMENT CARDS. PUT ONE OF THEM EITHER INTO PLAY OR UNDER YOUR CHARACTER CARD.

SHUFFLE THE REST OF THE REVEALED CARDS INTO YOUR DECK.

RECORDING: "DAUGHTER, IF YOU ARE HEARING THIS. . ."
ALYCIA: "HOW MANY MORE TIMES MUST I HEAR THIS SPEECH, FATHER?"
- HEIR OF CHIN ONE-SHOT

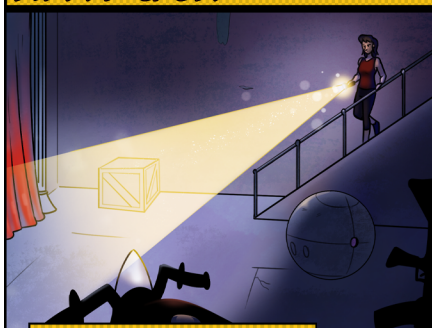
ART BY MIKE WILLIAMS

menagerie
OF THE
MULTIVERSE



CHARADE

HIDDEN CACHE



ONE-SHOT

REVEAL CARDS FROM THE TOP OF YOUR DECK UNTIL YOU REVEAL 2 EQUIPMENT CARDS. PUT ONE OF THEM EITHER INTO PLAY OR UNDER YOUR CHARACTER CARD.

SHUFFLE THE REST OF THE REVEALED CARDS INTO YOUR DECK.

RECORDING: "DAUGHTER, IF YOU ARE HEARING THIS..."
ALYCIA: "HOW MANY MORE TIMES MUST I HEAR THIS SPEECH, FATHER?"
- HEIR OF CHIN ONE-SHOT

ART BY MIKE WILLIAMS

MANAGERIA
OF THE
MULTIVERSE



CHARADE

RECKLESS ESCALATION



ONE-SHOT

DISCARD A CARD FROM UNDER YOUR CHARACTER CARD.

PUT UP TO TWO CARDS FROM UNDER YOUR CHARACTER CARD INTO PLAY OR PUT UP TO TWO CARDS FROM YOUR TRASH UNDER YOUR CHARACTER CARD.

"THE WINDOW?! I SWEAR YOU'VE BEEN PULLING THESE STUNTS ON PURPOSE SINCE YOU FOUND OUT ABOUT MY HEART MEDICATION."
- AGENT PARKER, HALCYON SPOTLIGHT #3

ART BY MIKE WILLIAMS

MANAGERIA
OF THE
MULTIVERSE



CHARADE

RECKLESS ESCALATION



ONE-SHOT

DISCARD A CARD FROM UNDER YOUR CHARACTER CARD.

PUT UP TO TWO CARDS FROM UNDER YOUR CHARACTER CARD INTO PLAY OR PUT UP TO TWO CARDS FROM YOUR TRASH UNDER YOUR CHARACTER CARD.

"THE WINDOW?! I SWEAR YOU'VE BEEN PULLING THESE STUNTS ON PURPOSE SINCE YOU FOUND OUT ABOUT MY HEART MEDICATION."
- AGENT PARKER, HALCYON SPOTLIGHT #3

ART BY MIKE WILLIAMS

MANAGERIA
OF THE
MULTIVERSE



CHARADE

RECKLESS ESCALATION



ONE-SHOT

DISCARD A CARD FROM UNDER YOUR CHARACTER CARD.

PUT UP TO TWO CARDS FROM UNDER YOUR CHARACTER CARD INTO PLAY OR PUT UP TO TWO CARDS FROM YOUR TRASH UNDER YOUR CHARACTER CARD.

"THE WINDOW?! I SWEAR YOU'VE BEEN PULLING THESE STUNTS ON PURPOSE SINCE YOU FOUND OUT ABOUT MY HEART MEDICATION."
- AGENT PARKER, HALCYON SPOTLIGHT #3

ART BY MIKE WILLIAMS

MANAGERIA
OF THE
MULTIVERSE



CHARADE

LEGACY OF TERROR



ONE-SHOT

PUT A CARD FROM YOUR HAND UNDER YOUR CHARACTER CARD.

PLAY A CARD OR USE A POWER.

"I'M WORRIED ABOUT HER. SHE MADE EXCUSES, BUT SHE WOKE UP IN A PANIC LAST NIGHT. I THINK ALL THIS STUFF WITH HER FATHER HAS HER ON EDGE."
- SUMMER NEWMAN, HEIR OF CHIN ONE-SHOT

ART BY MIKE WILLIAMS

MANAGERIA
OF THE
MULTIVERSE



CHARADE

LEGACY OF TERROR



ONE-SHOT

PUT A CARD FROM YOUR HAND UNDER YOUR CHARACTER CARD.

PLAY A CARD OR USE A POWER.

"I'M WORRIED ABOUT HER. SHE MADE EXCUSES, BUT SHE WOKE UP IN A PANIC LAST NIGHT. I THINK ALL THIS STUFF WITH HER FATHER HAS HER ON EDGE."
- SUMMER NEWMAN, HEIR OF CHIN ONE-SHOT

ART BY MIKE WILLIAMS

MANAGERIA
OF THE
MULTIVERSE



CHARADE

LEGACY OF TERROR



ONE-SHOT

PUT A CARD FROM YOUR HAND UNDER YOUR CHARACTER CARD.

PLAY A CARD OR USE A POWER.

"I'M WORRIED ABOUT HER. SHE MADE EXCUSES, BUT SHE WOKE UP IN A PANIC LAST NIGHT. I THINK ALL THIS STUFF WITH HER FATHER HAS HER ON EDGE."
- SUMMER NEWMAN, HEIR OF CHIN ONE-SHOT

ART BY MIKE WILLIAMS

MANAGERIA
OF THE
MULTIVERSE



CHARADE

LEGACY OF TERROR



ONE-SHOT

PUT A CARD FROM YOUR HAND UNDER YOUR CHARACTER CARD.

PLAY A CARD OR USE A POWER.

"I'M WORRIED ABOUT HER. SHE MADE EXCUSES, BUT SHE WOKE UP IN A PANIC LAST NIGHT. I THINK ALL THIS STUFF WITH HER FATHER HAS HER ON EDGE."
- SUMMER NEWMAN, HEIR OF CHIN ONE-SHOT

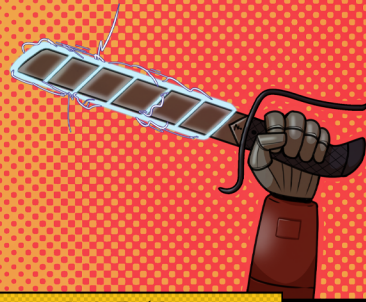
ART BY MIKE WILLIAMS

MANAGERIA
OF THE
MULTIVERSE



CHARADE

STUN BATON



EQUIPMENT

WHEN THIS CARD ENTERS PLAY, IF IT WAS NOT PLAYED FROM YOUR HAND, REDUCE THE NEXT DAMAGE DEALT TO CHARADE BY 2.

POWER: CHARADE DEALS ONE TARGET 1 LIGHTNING DAMAGE. REDUCE THE NEXT DAMAGE DEALT BY THAT TARGET BY 2.

"CHOOSING NON-LETHAL OPTIONS? I'M SURPRISED, MS. CHIN."

- AGENT PARKER, THE MENAGERIE SECRET ORIGINS #13

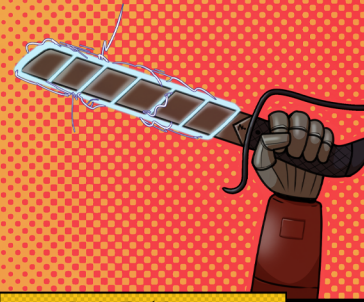
ART BY MIKE WILLIAMS

menagerie
OF THE
MULTIVERSE



CHARADE

STUN BATON



EQUIPMENT

WHEN THIS CARD ENTERS PLAY, IF IT WAS NOT PLAYED FROM YOUR HAND, REDUCE THE NEXT DAMAGE DEALT TO CHARADE BY 2.

POWER: CHARADE DEALS ONE TARGET 1 LIGHTNING DAMAGE. REDUCE THE NEXT DAMAGE DEALT BY THAT TARGET BY 2.

"CHOOSING NON-LETHAL OPTIONS? I'M SURPRISED, MS. CHIN."

- AGENT PARKER, THE MENAGERIE SECRET ORIGINS #13

ART BY MIKE WILLIAMS

menagerie
OF THE
MULTIVERSE



CHARADE

TARGETING VISOR



EQUIPMENT

PLAY THIS CARD NEXT TO A NON-HERO TARGET. THEN IF THIS CARD WAS NOT PLAYED FROM YOUR HAND, REVEAL THE TOP CARD OF THAT TARGET'S DECK AND REPLACE OR DISCARD IT.

DAMAGE DEALT BY CHARADE TO THAT TARGET IS IRREDUCIBLE.

"OKAY, LET'S TRY THAT AGAIN WITHOUT YOUR TOYS."

- TANGO ONE, GUN CLUB LIMITED SERIES

ART BY MIKE WILLIAMS

menagerie
OF THE
MULTIVERSE



CHARADE

TARGETING VISOR



EQUIPMENT

PLAY THIS CARD NEXT TO A NON-HERO TARGET. THEN IF THIS CARD WAS NOT PLAYED FROM YOUR HAND, REVEAL THE TOP CARD OF THAT TARGET'S DECK AND REPLACE OR DISCARD IT.

DAMAGE DEALT BY CHARADE TO THAT TARGET IS IRREDUCIBLE.

"OKAY, LET'S TRY THAT AGAIN WITHOUT YOUR TOYS."

- TANGO ONE, GUN CLUB LIMITED SERIES

ART BY MIKE WILLIAMS

menagerie
OF THE
MULTIVERSE



CHARADE



CHARADE

Team Menagerie Comics 25

7

PLANS WITHIN PLANS
POWER: EITHER PUT A CARD FROM YOUR HAND UNDER THIS CARD OR PUT A CARD FROM UNDER THIS CARD INTO PLAY.

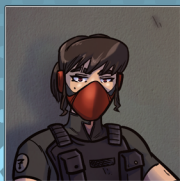
ART BY MIKE WILLIAMS



- ⇒ ONE PLAYER DRAWS A CARD.
- ⇒ DESTROY AN ONGOING CARD.
- ⇒ SELECT AN ENVIRONMENT CARD. IT DEALS ONE TARGET 2 FIRE DAMAGE.

ART BY MIKE WILLIAMS

CHARADE



ALIASES
 ALCIA CHIN

FIRST APPEARANCE
 THE MENAGERIE #3,
 MENAGERIE ANNUAL #2 (AS CHARADE)

GROUP AFFILIATIONS
 THE MENAGERIE, DIVISION 3

POWERS/SKILLS
 SECOND GENERATION SUPER GENIUS. PEAK HUMAN PHYSICAL CONDITIONING. EXPERT AT GUERRILLA WARFARE, STEALTH AND EVASION, AND MOST FIREARMS.

THE MENAGERIE

30

TESTERMAN
 WILL. WILL. & WILL
 GARRETT
 WILLIAMS

MEET YOUR NEW
 TEAM MEMBER
CHARADE



DIRECT EDITION

BARCODE

RATED T+

(Gun Club Variant available separately.)