



Sentinels of the Multiverse – Yak's Miscellany – Hero Deck: Emmy the Librarian



005.84

005.84 COMPUTER VIRUSES



## ONE-SHOT

REVEAL THE TOP 3 CARDS OF THE VILLAIN DECK. DISCARD 1 OF THEM AND RETURN THE OTHER 2 TO THE TOP OF THE DECK IN ANY ORDER.

NEVER PISS OFF A LIBRARIAN. LIBRARIANS CONTROL KNOWLEDGE. --EMMY (EMMY THE LIBRARIAN #14)

Emmy the Librarian

683.43

683.43 HANDGUNS



## ONGOING, LIMITED

POWER: EMMY DEALS 1 TARGET 3 PROJECTILE DAMAGE OR EMMY DEALS 3 TARGETS 1 PROJECTILE DAMAGE EACH.

I SAID, I DIDN'T LIKE GUNS. I DIDN'T SAY I DIDN'T HAVE ONE. --EMMY (EMMY THE LIBRARIAN #18)

Emmy the Librarian

683.43

683.43 HANDGUNS



## ONGOING, LIMITED

POWER: EMMY DEALS 1 TARGET 3 PROJECTILE DAMAGE OR EMMY DEALS 3 TARGETS 1 PROJECTILE DAMAGE EACH.

I SAID, I DIDN'T LIKE GUNS. I DIDN'T SAY I DIDN'T HAVE ONE. --EMMY (EMMY THE LIBRARIAN #18)

Emmy the Librarian

683.43

683.43 HANDGUNS



## ONGOING, LIMITED

POWER: EMMY DEALS 1 TARGET 3 PROJECTILE DAMAGE OR EMMY DEALS 3 TARGETS 1 PROJECTILE DAMAGE EACH.

I SAID, I DIDN'T LIKE GUNS. I DIDN'T SAY I DIDN'T HAVE ONE. --EMMY (EMMY THE LIBRARIAN #18)

Emmy the Librarian



363.7387

363.7387 FUMES, GASSES, SMOKE



ONGOING, LIMITED

AT THE END OF YOUR TURN, EMMY DEALS EACH NON-HERO TARGET 1 TOXIC DAMAGE.

IT'S A MORE POTENT VERSION OF SOMETHING MY SISTERS AND I COOKED UP BEFORE WE BROKE OUT OF THE CELL. DADDY HAD US LOCKED UP IN.  
--EMMY (EMMY THE LIBRARIAN #12)

Emmy the Librarian



363.7387

363.7387 FUMES, GASSES, SMOKE



ONGOING, LIMITED

AT THE END OF YOUR TURN, EMMY DEALS EACH NON-HERO TARGET 1 TOXIC DAMAGE.

IT'S A MORE POTENT VERSION OF SOMETHING MY SISTERS AND I COOKED UP BEFORE WE BROKE OUT OF THE CELL. DADDY HAD US LOCKED UP IN.  
--EMMY (EMMY THE LIBRARIAN #12)

Emmy the Librarian



363.7387

363.7387 FUMES, GASSES, SMOKE



ONGOING, LIMITED

AT THE END OF YOUR TURN, EMMY DEALS EACH NON-HERO TARGET 1 TOXIC DAMAGE.

IT'S A MORE POTENT VERSION OF SOMETHING MY SISTERS AND I COOKED UP BEFORE WE BROKE OUT OF THE CELL. DADDY HAD US LOCKED UP IN.  
--EMMY (EMMY THE LIBRARIAN #12)

Emmy the Librarian



671

671 METAL MANUFACTURING



ONE-SHOT

EACH PLAYER MAY SEARCH THEIR TRASH OR DECK FOR AN EQUIPMENT CARD AND PUT IT IN THEIR HAND. IF A PLAYER SEARCHED THEIR DECK, THEY MUST SHUFFLE IT.

YOU MAY DRAW A CARD.

YOU CAN MAKE ANYTHING...IF YOU HAVE ENOUGH PARTS LAYING AROUND. --EMMY (EMMY THE LIBRARIAN #29)

Emmy the Librarian





671

671 METAL MANUFACTURING



## ONE-SHOT

EACH PLAYER MAY SEARCH THEIR TRASH OR DECK FOR AN EQUIPMENT CARD AND PUT IT IN THEIR HAND. IF A PLAYER SEARCHED THEIR DECK, THEY MUST SHUFFLE IT.

YOU MAY DRAW A CARD.

YOU CAN MAKE ANYTHING...IF YOU HAVE ENOUGH PARTS LAYING AROUND. --EMMY (EMMY THE LIBRARIAN #29)



Emmy the  
librarian

133.1

133.1 @GHOSTS



## ONE-SHOT

DESTROY AN ONGOING OR NON-TARGET ENVIRONMENT CARD. DEAL ALL TARGETS IN THE PLAY AREA OF THE DESTROYED CARD 1 PSYCHIC DAMAGE.

EVERYBODY HAS GHOSTS IN THEIR PAST, IF YOU KNOW WHERE TO LOOK. AND I'M A LIBRARIAN, I KNOW WHERE TO LOOK. --EMMY (EMMY THE LIBRARIAN #35)



Emmy the  
librarian

133.1

133.1 @GHOSTS



## ONE-SHOT

DESTROY AN ONGOING OR NON-TARGET ENVIRONMENT CARD. DEAL ALL TARGETS IN THE PLAY AREA OF THE DESTROYED CARD 1 PSYCHIC DAMAGE.

EVERYBODY HAS GHOSTS IN THEIR PAST, IF YOU KNOW WHERE TO LOOK. AND I'M A LIBRARIAN, I KNOW WHERE TO LOOK. --EMMY (EMMY THE LIBRARIAN #35)



Emmy the  
librarian

133.1

133.1 @GHOSTS



## ONE-SHOT

DESTROY AN ONGOING OR NON-TARGET ENVIRONMENT CARD. DEAL ALL TARGETS IN THE PLAY AREA OF THE DESTROYED CARD 1 PSYCHIC DAMAGE.

EVERYBODY HAS GHOSTS IN THEIR PAST, IF YOU KNOW WHERE TO LOOK. AND I'M A LIBRARIAN, I KNOW WHERE TO LOOK. --EMMY (EMMY THE LIBRARIAN #35)



Emmy the  
librarian



636.8

636.8 CATS



## ONGOING, LIMITED

WHEN DAMAGE WOULD BE DEALT TO A NON-CHARACTER HERO TARGET, REDUCE THAT DAMAGE BY 1 AND REDIRECT IT TO EMMY.

AT THE START OF YOUR TURN, YOU MAY DRAW A CARD AND DESTROY THIS CARD.

YOU WANNA TAKE POT SHOTS AT EACH OTHER, SO FOR IT, AND STOP MISSING. BUT YOU BETTER DAMN WELL MAKE SURE YOU HAVE A CLEAN FIELD OF FIRE OR YOU'LL HAVE TO ANSWER TO ME. --EMMY (EMMY THE LIBRARIAN #33)

Emmy the Librarian



636.8

636.8 CATS



## ONGOING, LIMITED

WHEN DAMAGE WOULD BE DEALT TO A NON-CHARACTER HERO TARGET, REDUCE THAT DAMAGE BY 1 AND REDIRECT IT TO EMMY.

AT THE START OF YOUR TURN, YOU MAY DRAW A CARD AND DESTROY THIS CARD.

YOU WANNA TAKE POT SHOTS AT EACH OTHER, SO FOR IT, AND STOP MISSING. BUT YOU BETTER DAMN WELL MAKE SURE YOU HAVE A CLEAN FIELD OF FIRE OR YOU'LL HAVE TO ANSWER TO ME. --EMMY (EMMY THE LIBRARIAN #33)

Emmy the Librarian



636.8

636.8 CATS



## ONGOING, LIMITED

WHEN DAMAGE WOULD BE DEALT TO A NON-CHARACTER HERO TARGET, REDUCE THAT DAMAGE BY 1 AND REDIRECT IT TO EMMY.

AT THE START OF YOUR TURN, YOU MAY DRAW A CARD AND DESTROY THIS CARD.

YOU WANNA TAKE POT SHOTS AT EACH OTHER, SO FOR IT, AND STOP MISSING. BUT YOU BETTER DAMN WELL MAKE SURE YOU HAVE A CLEAN FIELD OF FIRE OR YOU'LL HAVE TO ANSWER TO ME. --EMMY (EMMY THE LIBRARIAN #33)

Emmy the Librarian



796.42

796.42 RUNNING



## ONE-SHOT

YOU MAY USE A POWER NOW.

I KNOW I'M WAY FASTER THAN THE AVERAGE PERSON, EVEN THE AVERAGE MUTANT, BUT I LIKE TO SAVE IT FOR WHEN I REALLY NEED IT. --EMMY (EMMY THE LIBRARIAN #3)

Emmy the Librarian





796.42

796.42 RUNNING



ONE-SHOT

YOU MAY USE A POWER NOW.

I KNOW I'M WAY FASTER THAN THE AVERAGE PERSON, EVEN THE AVERAGE MUTANT, BUT I LIKE TO SAVE IT FOR WHEN I REALLY NEED IT. --EMMY (EMMY THE LIBRARIAN #3)

Emmy the Librarian



711

711 URBAN PLANNING



ONGOING

HERO TARGETS ARE IMMUNE TO ENVIRONMENT DAMAGE. PLAY THE TOP CARD OF THE ENVIRONMENT DECK.

AT THE START OF YOUR TURN, DESTROY THIS CARD.

THIS IS MY CITY NOW. IF IT HAPPENS HERE, IT ONLY DOES SO BECAUSE I ALLOW. --EMMY (EMMY THE LIBRARIAN #36)

Emmy the Librarian



711

711 URBAN PLANNING



ONGOING

HERO TARGETS ARE IMMUNE TO ENVIRONMENT DAMAGE. PLAY THE TOP CARD OF THE ENVIRONMENT DECK.

AT THE START OF YOUR TURN, DESTROY THIS CARD.

THIS IS MY CITY NOW. IF IT HAPPENS HERE, IT ONLY DOES SO BECAUSE I ALLOW. --EMMY (EMMY THE LIBRARIAN #36)

Emmy the Librarian



711

711 URBAN PLANNING



ONGOING

HERO TARGETS ARE IMMUNE TO ENVIRONMENT DAMAGE. PLAY THE TOP CARD OF THE ENVIRONMENT DECK.

AT THE START OF YOUR TURN, DESTROY THIS CARD.

THIS IS MY CITY NOW. IF IT HAPPENS HERE, IT ONLY DOES SO BECAUSE I ALLOW. --EMMY (EMMY THE LIBRARIAN #36)

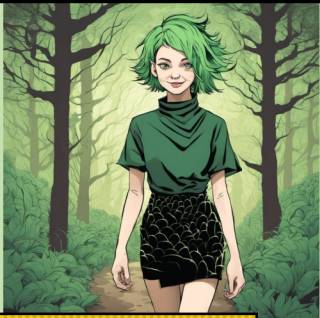
Emmy the Librarian





634.9

634.9 FORESTRY



## ONE-SHOT

REVEAL THE TOP 3 CARDS OF THE ENVIRONMENT DECK.

PLAY 1 OF THE CARDS.

DISCARD 1 OF THE CARDS.

MOVE THE FINAL CARD TO THE BOTTOM OF THE ENVIRONMENT DECK.

HOW DO I KNOW THESE THINGS?  
IT'S CALLED A BOOK. YOU SHOULD TRY ONE SOMEDAY.  
--EMMY (EMMY THE LIBRARIAN #11)

Emmy the  
librarian



634.9

634.9 FORESTRY



## ONE-SHOT

REVEAL THE TOP 3 CARDS OF THE ENVIRONMENT DECK.

PLAY 1 OF THE CARDS.

DISCARD 1 OF THE CARDS.

MOVE THE FINAL CARD TO THE BOTTOM OF THE ENVIRONMENT DECK.

HOW DO I KNOW THESE THINGS?  
IT'S CALLED A BOOK. YOU SHOULD TRY ONE SOMEDAY.  
--EMMY (EMMY THE LIBRARIAN #11)

Emmy the  
librarian



634.9

634.9 FORESTRY



## ONE-SHOT

REVEAL THE TOP 3 CARDS OF THE ENVIRONMENT DECK.

PLAY 1 OF THE CARDS.

DISCARD 1 OF THE CARDS.

MOVE THE FINAL CARD TO THE BOTTOM OF THE ENVIRONMENT DECK.

HOW DO I KNOW THESE THINGS?  
IT'S CALLED A BOOK. YOU SHOULD TRY ONE SOMEDAY.  
--EMMY (EMMY THE LIBRARIAN #11)

Emmy the  
librarian



001.944

001.944 CRYPTOZOOLOGY



## ONE-SHOT

REVEAL THE TOP 3 CARDS OF YOUR DECK.

DRAW 1.

PLAY 1.

DISCARD 1.

MY MOM USED TO SAY, IT'S WHEN YOUR BACK'S AGAINST THE  
WALL THAT YOU DISCOVER WHAT KIND OF PERSON YOU TRULY  
ARE. --EMMY (EMMY THE LIBRARIAN #5)

Emmy the  
librarian





001.944

001.941 CRYPTOZOOLOGY



ONE-SHOT

REVEAL THE TOP 3 CARDS OF YOUR DECK.

DRAW 1.

PLAY 1.

DISCARD 1.

MY MOM USED TO SAY IT'S WHEN YOUR BACK'S AGAINST THE WALL THAT YOU DISCOVER WHAT KIND OF PERSON YOU TRULY ARE. --EMMY (EMMY THE LIBRARIAN #5)

Emmy the Librarian



613.79

613.79 RELAXATION AND HEALTH



ONE-SHOT

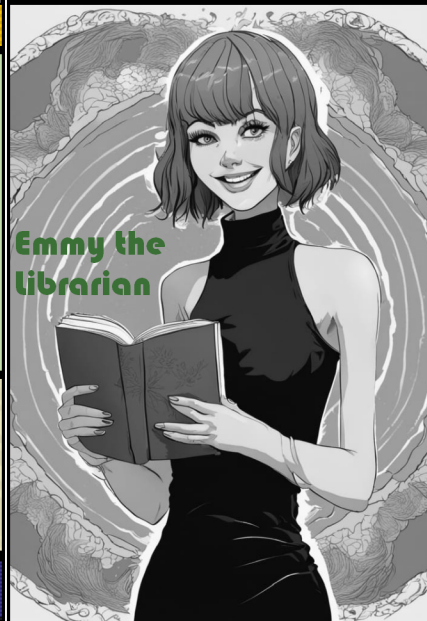
IF EMMY HAS GREATER THAN 15HP, DRAW 2 CARDS.

IF EMMY HAS LESS THAN 15 HP, EMMY REGAINS 2HP.

IF EMMY HAS EXACTLY 15HP, EMMY DEALS 1 TARGET 5 IRREDUCIBLE MELEE DAMAGE.

JUST BREATHE, EMMY. YOU'VE GOT THIS.  
--EMMY (EMMY THE LIBRARIAN #37)

Emmy the Librarian



613.79

613.79 RELAXATION AND HEALTH



ONE-SHOT

IF EMMY HAS GREATER THAN 15HP, DRAW 2 CARDS.

IF EMMY HAS LESS THAN 15 HP EMMY REGAINS 2HP.

IF EMMY HAS EXACTLY 15HP, EMMY DEALS 1 TARGET 5 IRREDUCIBLE MELEE DAMAGE.

JUST BREATHE, EMMY. YOU'VE GOT THIS.  
--EMMY (EMMY THE LIBRARIAN #37)

Emmy the Librarian



613.79

613.79 RELAXATION AND HEALTH



ONE-SHOT

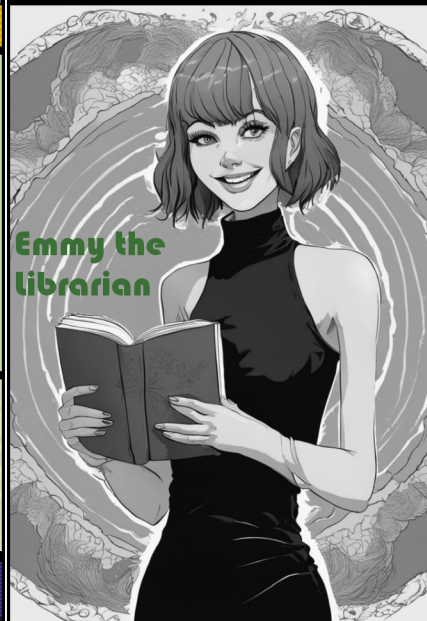
IF EMMY HAS GREATER THAN 15HP, DRAW 2 CARDS.

IF EMMY HAS LESS THAN 15 HP, EMMY REGAINS 2HP.

IF EMMY HAS EXACTLY 15HP, EMMY DEALS 1 TARGET 5 IRREDUCIBLE MELEE DAMAGE.

JUST BREATHE, EMMY. YOU'VE GOT THIS.  
--EMMY (EMMY THE LIBRARIAN #37)

Emmy the Librarian





537

537 ELECTRICITY

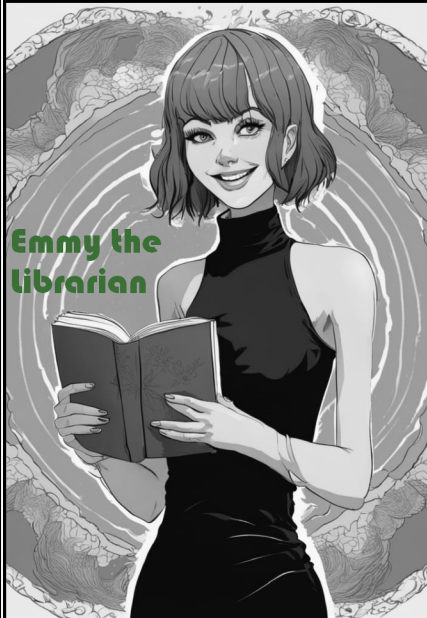


## ONE-SHOT

THE ENVIRONMENT DEALS ALL TARGETS 2 LIGHTNING DAMAGE. THEN THE ENVIRONMENT DEALS ALL NON-HERO TARGETS 2 LIGHTNING DAMAGE.

DON'T TOUCH THE HANDRAILS!  
AND WHEN I SAY JUMP, JUMP!  
—EMMY (EMMY THE LIBRARIAN #10)

Emmy the  
librarian



537

537 ELECTRICITY



## ONE-SHOT

THE ENVIRONMENT DEALS ALL TARGETS 2 LIGHTNING DAMAGE. THEN THE ENVIRONMENT DEALS ALL NON-HERO TARGETS 2 LIGHTNING DAMAGE.

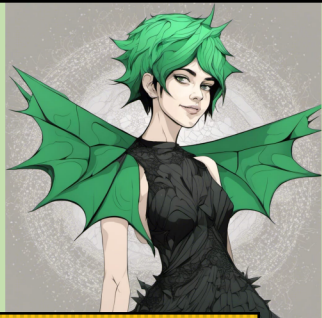
DON'T TOUCH THE HANDRAILS!  
AND WHEN I SAY JUMP, JUMP!  
—EMMY (EMMY THE LIBRARIAN #10)

Emmy the  
librarian



599.4

599.4 BATS



## ONGOING

WHEN THIS CARD ENTERS PLAY, YOU MAY DRAW A CARD.  
WHEN EMMY WOULD BE DEALT DAMAGE, REDUCE IT BY 1.  
AT THE START OF YOUR TURN, DESTROY THIS CARD.

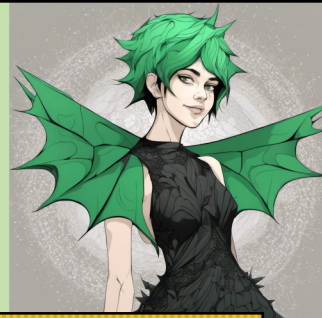
HE MADE A LAME COMMENTS ABOUT WANTING TO  
"CHECK ME OUT," SO I KNOCKED HIM OUT AND STOLE HIS  
WINGS. —EMMY (EMMY THE LIBRARIAN #27)

Emmy the  
librarian



599.4

599.4 BATS



## ONGOING

WHEN THIS CARD ENTERS PLAY, YOU MAY DRAW A CARD.  
WHEN EMMY WOULD BE DEALT DAMAGE, REDUCE IT BY 1.  
AT THE START OF YOUR TURN, DESTROY THIS CARD.

HE MADE A LAME COMMENTS ABOUT WANTING TO  
"CHECK ME OUT," SO I KNOCKED HIM OUT AND STOLE HIS  
WINGS. —EMMY (EMMY THE LIBRARIAN #27)

Emmy the  
librarian





