

ENJOINING RITUAL



RITUAL

DURING EACH OTHER PLAYER'S TURN, THEY MAY SKIP EITHER THEIR PLAY PHASE OR THEIR POWER PHASE. IF A PHASE WAS SKIPPED IN THIS WAY, PUT THE TOP CARD OF THEIR DECK UNDER THIS CARD.

AT THE START OF YOUR TURN, MOVE ALL CARDS UNDER THIS CARD TO THE APPROPRIATE TRASH PILE. FOR EACH CARD MOVED THIS WAY, YOU MAY IMMEDIATELY EITHER USE A POWER OR PLAY A CARD. THEN DESTROY THIS CARD.

ADAM: "YOU CANNOT LAST MUCH LONGER."
BUFFY: "WE CAN. WE ARE FOREVER."
- "PRIMEVAL"



Buffy

BAIT AND HOOK



ONGOING

WHEN THIS CARD ENTERS PLAY, DISCARD THE TOP CARD OF THE VILLAIN DECK.

AT THE START OF YOUR TURN, YOU MAY HAVE **BUFFY** DEAL 1 TARGET 4 MELEE DAMAGE. IF YOU DO, DESTROY THIS CARD.

ANGELUS: "YOU'RE GOING TO HELL."
BUFFY: "SAVE ME A SEAT."
- BECOMING, PART 2



Buffy

BAIT AND HOOK



ONGOING

WHEN THIS CARD ENTERS PLAY, DISCARD THE TOP CARD OF THE VILLAIN DECK.

AT THE START OF YOUR TURN, YOU MAY HAVE **BUFFY** DEAL 1 TARGET 4 MELEE DAMAGE. IF YOU DO, DESTROY THIS CARD.

ANGELUS: "YOU'RE GOING TO HELL."
BUFFY: "SAVE ME A SEAT."
- BECOMING, PART 2



Buffy

BAIT AND HOOK



ONGOING

WHEN THIS CARD ENTERS PLAY, DISCARD THE TOP CARD OF THE VILLAIN DECK.

AT THE START OF YOUR TURN, YOU MAY HAVE **BUFFY** DEAL 1 TARGET 4 MELEE DAMAGE. IF YOU DO, DESTROY THIS CARD.

ANGELUS: "YOU'RE GOING TO HELL."
BUFFY: "SAVE ME A SEAT."
- BECOMING, PART 2



Buffy

Sentinels of the Multiverse – Buffyverse – Hero Deck: Buffy

CHOSEN ONE



ONGOING

INCREASE DAMAGE DEALT BY **BUFFY** BY 1.
YOU MAY USE AN ADDITIONAL POWER DURING YOUR POWER PHASE.

REDUCE DAMAGE DEALT BY HERO TARGETS OTHER THAN **BUFFY** BY 1.

AT THE END OF YOUR TURN, IF THIS CARD DIDN'T ENTER PLAY THIS TURN, DESTROY IT.

"SHE ALONE WILL HAVE THE STRENGTH AND SKILL TO... THERE'S THAT WORD AGAIN. WHAT YOU ARE. HOW YOU'LL DIE."
-THE FIRST, "CHOSEN"

Buffy

CHOSEN ONE



ONGOING

INCREASE DAMAGE DEALT BY **BUFFY** BY 1.
YOU MAY USE AN ADDITIONAL POWER DURING YOUR POWER PHASE.

REDUCE DAMAGE DEALT BY HERO TARGETS OTHER THAN **BUFFY** BY 1.

AT THE END OF YOUR TURN, IF THIS CARD DIDN'T ENTER PLAY THIS TURN, DESTROY IT.

"SHE ALONE WILL HAVE THE STRENGTH AND SKILL TO... THERE'S THAT WORD AGAIN. WHAT YOU ARE. HOW YOU'LL DIE."
-THE FIRST, "CHOSEN"

Buffy

FAMILIAR GROUND



ONGOING

REDUCE THE FIRST DAMAGE DEALT TO **BUFFY** EACH TURN BY X, WHERE X IS THE NUMBER OF NON-TARGET ENVIRONMENT CARDS IN PLAY.

POWER: DESTROY AN ENVIRONMENT CARD AND THIS CARD.

"YOU'RE ALL MESSING WITH PRIMEVAL FORCES YOU CANT HOPE TO UNDERSTAND. I'M THE SLAYER. AND YOU'RE PLAYING ON MY TURF."
-BUFFY, "PRIMEVAL"

Buffy

FAMILIAR GROUND



ONGOING

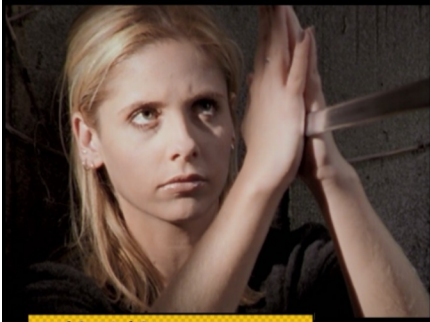
REDUCE THE FIRST DAMAGE DEALT TO **BUFFY** EACH TURN BY X, WHERE X IS THE NUMBER OF NON-TARGET ENVIRONMENT CARDS IN PLAY.

POWER: DESTROY AN ENVIRONMENT CARD AND THIS CARD.

"YOU'RE ALL MESSING WITH PRIMEVAL FORCES YOU CANT HOPE TO UNDERSTAND. I'M THE SLAYER. AND YOU'RE PLAYING ON MY TURF."
-BUFFY, "PRIMEVAL"

Buffy

CHAMPION OF THE PEOPLE



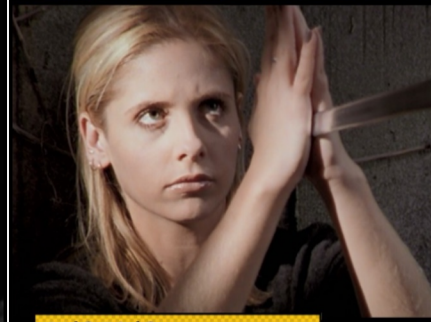
ONGOING

REDUCE DAMAGE DEALT TO **BUFFY** BY 2.
WHENEVER A HERO TARGET WOULD BE DEALT DAMAGE BY A NON-HERO TARGET, REDIRECT THAT DAMAGE TO **BUFFY**.
AT THE START OF YOUR TURN, DESTROY THIS CARD.

"SHE'S LAID DOWN HER LIFE ...
LITERALLY ... TO PROTECT THE PEOPLE
AROUND HER. THIS GIRL HAS DIED TWO TIMES,
AND SHE'S STILL STANDING."
-XANDER, "DIRTY GIRLS"



CHAMPION OF THE PEOPLE



ONGOING

REDUCE DAMAGE DEALT TO **BUFFY** BY 2.
WHENEVER A HERO TARGET WOULD BE DEALT DAMAGE BY A NON-HERO TARGET, REDIRECT THAT DAMAGE TO **BUFFY**.
AT THE START OF YOUR TURN, DESTROY THIS CARD.

"SHE'S LAID DOWN HER LIFE ...
LITERALLY ... TO PROTECT THE PEOPLE
AROUND HER. THIS GIRL HAS DIED TWO TIMES,
AND SHE'S STILL STANDING."
-XANDER, "DIRTY GIRLS"



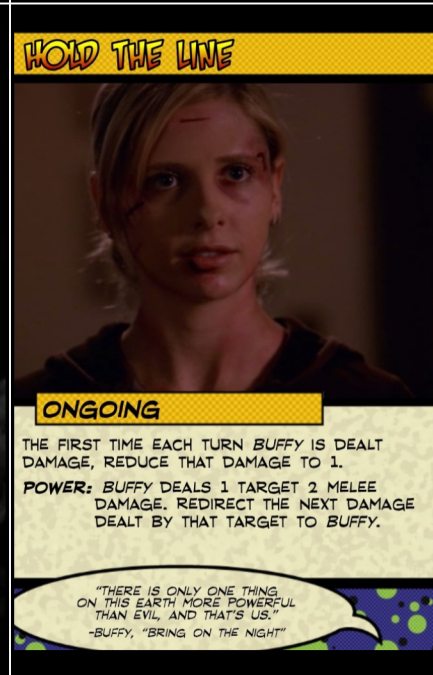
HOLD THE LINE



ONGOING

THE FIRST TIME EACH TURN **BUFFY** IS DEALT DAMAGE, REDUCE THAT DAMAGE TO 1.
POWER: **BUFFY** DEALS 1 TARGET 2 MELEE DAMAGE. REDIRECT THE NEXT DAMAGE DEALT BY THAT TARGET TO **BUFFY**.

"THERE IS ONLY ONE THING
ON THIS EARTH MORE POWERFUL
THAN EVIL, AND THAT'S US."
-BUFFY, "BRING ON THE NIGHT"



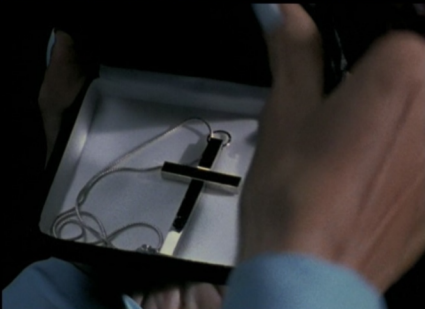
ONGOING

THE FIRST TIME EACH TURN **BUFFY** IS DEALT DAMAGE, REDUCE THAT DAMAGE TO 1.
POWER: **BUFFY** DEALS 1 TARGET 2 MELEE DAMAGE. REDIRECT THE NEXT DAMAGE DEALT BY THAT TARGET TO **BUFFY**.

"THERE IS ONLY ONE THING
ON THIS EARTH MORE POWERFUL
THAN EVIL, AND THAT'S US."
-BUFFY, "BRING ON THE NIGHT"



HOLY SYMBOL



EQUIPMENT, LIMITED

INCREASE RADIANT DAMAGE DEALT BY BUFFY BY 1.

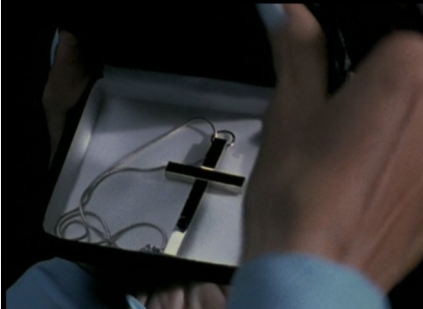
THE FIRST TIME EACH TURN BUFFY IS DEALT DAMAGE BY A TARGET, SHE DEALS THAT TARGET 0 RADIANT DAMAGE.

"THIS SYMBOL, THESE TWO PLANKS OF WOOD. IT CONFOUNDS ME. SUFFUSES ME WITH MORTAL DREAD."

-THE MASTER, "NIGHTMARES"



HOLY SYMBOL



EQUIPMENT, LIMITED

INCREASE RADIANT DAMAGE DEALT BY BUFFY BY 1.

THE FIRST TIME EACH TURN BUFFY IS DEALT DAMAGE BY A TARGET, SHE DEALS THAT TARGET 0 RADIANT DAMAGE.

"THIS SYMBOL, THESE TWO PLANKS OF WOOD. IT CONFOUNDS ME. SUFFUSES ME WITH MORTAL DREAD."

-THE MASTER, "NIGHTMARES"



R&P



ONE-SHOT

DRAW 2 CARDS.

BUFFY REGAINS 3 HP.

PREVENT ALL DAMAGE BUFFY WOULD DEAL UNTIL THE START OF HER NEXT TURN.

"WE SAVED THE WORLD. I SAY WE PARTY."

-BUFFY, "PROPHECY GIRL"



R&P



ONE-SHOT

DRAW 2 CARDS.

BUFFY REGAINS 3 HP.

PREVENT ALL DAMAGE BUFFY WOULD DEAL UNTIL THE START OF HER NEXT TURN.

"WE SAVED THE WORLD. I SAY WE PARTY."

-BUFFY, "PROPHECY GIRL"



SHINING SWORD



EQUIPMENT, LIMITED

POWER: BUFFY DEALS 1 TARGET 3 MELEE DAMAGE.
REDUCE DAMAGE DEALT TO *BUFFY* BY THAT TARGET BY 1 UNTIL THE START OF YOUR NEXT TURN.

"HUMAN RULES DON'T APPLY.
THERE'S ONLY ME. I AM THE LAW."
-BUFFY, "SELFLESS"



SHINING SWORD



EQUIPMENT, LIMITED

POWER: BUFFY DEALS 1 TARGET 3 MELEE DAMAGE.
REDUCE DAMAGE DEALT TO *BUFFY* BY THAT TARGET BY 1 UNTIL THE START OF YOUR NEXT TURN.

"HUMAN RULES DON'T APPLY.
THERE'S ONLY ME. I AM THE LAW."
-BUFFY, "SELFLESS"



STAKE THROWER



EQUIPMENT, LIMITED

POWER: BUFFY DEALS 1 TARGET 3 PROJECTILE DAMAGE AND 0 RADIANT DAMAGE.

"GOODBYE STAKES, HELLO
FLYING FATALITY."
-BUFFY, "ANGEL"



STAKE THROWER



EQUIPMENT, LIMITED

POWER: BUFFY DEALS 1 TARGET 3 PROJECTILE DAMAGE AND 0 RADIANT DAMAGE.

"GOODBYE STAKES, HELLO
FLYING FATALITY."
-BUFFY, "ANGEL"



VENDETTA



ONGOING

PLAY THIS CARD BY A TARGET.
INCREASE DAMAGE DEALT BY BUFFY TO THAT TARGET BY 1. WHENEVER BUFFY DEALS DAMAGE TO THAT TARGET, SHE REGAINS 1 HP.
AT THE END OF YOUR TURN, IF THIS CARD DIDN'T ENTER PLAY THIS TURN, DESTROY IT.

"YOU READY TO CUT LOOSE?
OKAY THEN. GIVE US A KISS."

-FAITH, "GRADUATION DAY PART 2"



VENDETTA



ONGOING

PLAY THIS CARD BY A TARGET.
INCREASE DAMAGE DEALT BY BUFFY TO THAT TARGET BY 1. WHENEVER BUFFY DEALS DAMAGE TO THAT TARGET, SHE REGAINS 1 HP.
AT THE END OF YOUR TURN, IF THIS CARD DIDN'T ENTER PLAY THIS TURN, DESTROY IT.

"YOU READY TO CUT LOOSE?
OKAY THEN. GIVE US A KISS."

-FAITH, "GRADUATION DAY PART 2"



FINAL CLEAVE



ONE-SHOT

BUFFY DEALS 1 TARGET 3 MELEE DAMAGE.
IF THAT TARGET HAS 2 OR FEWER HP REMAINING, DESTROY IT.

"HE HAD TO SPLIT."

-BUFFY, "CHOSEN"



FINAL CLEAVE



ONE-SHOT

BUFFY DEALS 1 TARGET 3 MELEE DAMAGE.
IF THAT TARGET HAS 2 OR FEWER HP REMAINING, DESTROY IT.

"HE HAD TO SPLIT."

-BUFFY, "CHOSEN"



FINAL CLEAVE



ONE-SHOT

BUFFY DEALS 1 TARGET 3 MELEE DAMAGE. IF THAT TARGET HAS 2 OR FEWER HP REMAINING, DESTROY IT.

"HE HAD TO SPLIT."
-BUFFY, "CHOSEN"



PREPARE FOR WAR



ONE-SHOT

REVEAL CARDS FROM THE TOP OF BUFFY'S DECK UNTIL 2 EQUIPMENT CARDS ARE REVEALED. PUT ONE INTO PLAY OR INTO YOUR HAND AND SHUFFLE THE REMAINING REVEALED CARDS INTO YOUR DECK.

IF AN EQUIPMENT CARD WAS PUT INTO YOUR HAND THIS WAY, INCREASE DAMAGE DEALT BY BUFFY BY 1 UNTIL THE END OF YOUR NEXT TURN.

"I'M DONE WAITING. THEY WANT AN APOCALYPSE? OH, WE'LL GIVE 'EM ONE."
-BUFFY, "BRING ON THE NIGHT"



PREPARE FOR WAR



ONE-SHOT

REVEAL CARDS FROM THE TOP OF BUFFY'S DECK UNTIL 2 EQUIPMENT CARDS ARE REVEALED. PUT ONE INTO PLAY OR INTO YOUR HAND AND SHUFFLE THE REMAINING REVEALED CARDS INTO YOUR DECK.

IF AN EQUIPMENT CARD WAS PUT INTO YOUR HAND THIS WAY, INCREASE DAMAGE DEALT BY BUFFY BY 1 UNTIL THE END OF YOUR NEXT TURN.

"I'M DONE WAITING. THEY WANT AN APOCALYPSE? OH, WE'LL GIVE 'EM ONE."
-BUFFY, "BRING ON THE NIGHT"



PREPARE FOR WAR



ONE-SHOT

REVEAL CARDS FROM THE TOP OF BUFFY'S DECK UNTIL 2 EQUIPMENT CARDS ARE REVEALED. PUT ONE INTO PLAY OR INTO YOUR HAND AND SHUFFLE THE REMAINING REVEALED CARDS INTO YOUR DECK.

IF AN EQUIPMENT CARD WAS PUT INTO YOUR HAND THIS WAY, INCREASE DAMAGE DEALT BY BUFFY BY 1 UNTIL THE END OF YOUR NEXT TURN.

"I'M DONE WAITING. THEY WANT AN APOCALYPSE? OH, WE'LL GIVE 'EM ONE."
-BUFFY, "BRING ON THE NIGHT"



RAPID COMBO



ONE-SHOT

BUFFY DEALS 1 TARGET 1 MELEE DAMAGE, THEN DEALS THAT TARGET 1 MELEE DAMAGE, THEN DEALS THAT TARGET 1 MELEE DAMAGE.

GLORY: "YOU'RE A MORTAL. YOU CAN'T UNDERSTAND MY PAIN."
BUFFY: "I GUESS I'LL JUST HAVE TO SETTLE FOR CAUSING IT."
- "THE GIFT"

Buffy

RAPID COMBO



ONE-SHOT

BUFFY DEALS 1 TARGET 1 MELEE DAMAGE, THEN DEALS THAT TARGET 1 MELEE DAMAGE, THEN DEALS THAT TARGET 1 MELEE DAMAGE.

GLORY: "YOU'RE A MORTAL. YOU CAN'T UNDERSTAND MY PAIN."
BUFFY: "I GUESS I'LL JUST HAVE TO SETTLE FOR CAUSING IT."
- "THE GIFT"

Buffy

RAPID COMBO



ONE-SHOT

BUFFY DEALS 1 TARGET 1 MELEE DAMAGE, THEN DEALS THAT TARGET 1 MELEE DAMAGE, THEN DEALS THAT TARGET 1 MELEE DAMAGE.

GLORY: "YOU'RE A MORTAL. YOU CAN'T UNDERSTAND MY PAIN."
BUFFY: "I GUESS I'LL JUST HAVE TO SETTLE FOR CAUSING IT."
- "THE GIFT"

Buffy

STRIKE THE SOURCE



ONE-SHOT

BUFFY DEALS 1 TARGET 2 MELEE DAMAGE. DESTROY AN ONGOING CARD BELONGING TO THAT TARGET'S DECK.

"YOU CANNOT HOPE TO GRASP THE SOURCE OF OUR POWER. BUT YOURS IS RIGHT HERE."
-BUFFY, "PRIMEVAL"

Buffy

STRIKE THE SOURCE



ONE-SHOT

BUFFY DEALS 1 TARGET 2 MELEE DAMAGE. DESTROY AN ONGOING CARD BELONGING TO THAT TARGET'S DECK.

"YOU CANNOT HOPE TO GRASP THE SOURCE OF OUR POWER, BUT YOURS IS RIGHT HERE."

-BUFFY, "PRIMEVAL"



STRIKE THE SOURCE



ONE-SHOT

BUFFY DEALS 1 TARGET 2 MELEE DAMAGE. DESTROY AN ONGOING CARD BELONGING TO THAT TARGET'S DECK.

"YOU CANNOT HOPE TO GRASP THE SOURCE OF OUR POWER, BUT YOURS IS RIGHT HERE."

-BUFFY, "PRIMEVAL"



SWIFT STRIKES



ONE-SHOT

BUFFY DEALS UP TO 3 TARGETS 2 MELEE DAMAGE EACH.

"I'M THE THING THAT MONSTERS HAVE NIGHTMARES ABOUT."

-BUFFY, "SHOWTIME"



SWIFT STRIKES



ONE-SHOT

BUFFY DEALS UP TO 3 TARGETS 2 MELEE DAMAGE EACH.

"I'M THE THING THAT MONSTERS HAVE NIGHTMARES ABOUT."

-BUFFY, "SHOWTIME"



SWIFT STRIKES



ONE-SHOT

BUFFY DEALS UP TO 3 TARGETS 2 MELEE DAMAGE EACH.

"I'M THE THING THAT MONSTERS HAVE NIGHTMARES ABOUT."

-BUFFY, "SHOWTIME"

WOODEN STAKE



EQUIPMENT, LIMITED

THE FIRST TIME EACH TURN BUFFY DEALS MELEE DAMAGE TO A TARGET, SHE DEALS THAT TARGET 0 RADIANT DAMAGE.

POWER: BUFFY DEALS 1 TARGET 2 MELEE DAMAGE.

"YOU NAMED YOUR STAKE? REMIND ME TO GET YOU A STUFFED ANIMAL."

-BUFFY, "BECOMING, PART 1"

WOODEN STAKE



EQUIPMENT, LIMITED

THE FIRST TIME EACH TURN BUFFY DEALS MELEE DAMAGE TO A TARGET, SHE DEALS THAT TARGET 0 RADIANT DAMAGE.

POWER: BUFFY DEALS 1 TARGET 2 MELEE DAMAGE.

"YOU NAMED YOUR STAKE? REMIND ME TO GET YOU A STUFFED ANIMAL."

-BUFFY, "BECOMING, PART 1"

WOODEN STAKE



EQUIPMENT, LIMITED

THE FIRST TIME EACH TURN BUFFY DEALS MELEE DAMAGE TO A TARGET, SHE DEALS THAT TARGET 0 RADIANT DAMAGE.

POWER: BUFFY DEALS 1 TARGET 2 MELEE DAMAGE.

"YOU NAMED YOUR STAKE? REMIND ME TO GET YOU A STUFFED ANIMAL."

-BUFFY, "BECOMING, PART 1"

Buffy

Buffy

Buffy

Buffy

SCIMITALS
Buffy
OF THE
MULTIVERSE
32




FOCUS

POWER: INCREASE DAMAGE DEALT BY BUFFY BY 1 UNTIL THE END OF YOUR NEXT TURN



ART AND CHARACTER FROM "BUFFY THE VAMPIRE SLAYER"



BUFFY ANNE SUMMERS
1981 - 2001
BELOVED SISTER
DEVOTED FRIEND
SHE SAVED THE WORLD
A LOT

- 1 HERO MAY PLAY A CARD NOW.
- 1 HERO REGAINS 2 HP.
- 1 HERO DEALS 1 TARGET 1 MELEE DAMAGE AND 0 RADIANT DAMAGE.