



Sentinels of the Multiverse – Order of the Rose (by Flat on his Face) – Hero Deck: Brunι

BALLAD OF BATTLE



ONGOING, POEM

WHEN THIS CARD ENTERS PLAY, DESTROY ALL OTHER POEM CARDS. THEN, PUT UP TO 4 CARDS FROM YOUR HAND UNDER THIS ONE. AT THE START OF YOUR TURN, DISCARD 1 CARD FROM UNDER THIS.

INCREASE DAMAGE DEALT BY ALL HERO TARGETS BY 1.

CARDS UNDER THIS CARD ARE NOT IN PLAY. AT THE END OF YOUR TURN, IF NO CARDS REMAIN UNDER THIS ONE, DESTROY THIS CARD.

THIS DAY FINDS A FOE FOR A FIGHT
NAUGHT OTHER WHILE THIS ONE'S READY
DISPATCHED AS WANES ANOTHER NIGHT,
I AWAIT A BEAST TO BEST ME

FlatOnHisFace@yahoo.com

Illustration on superbwallpapers.com

CHANT OF CHIVALRY



ONGOING, POEM

WHEN THIS CARD ENTERS PLAY, DESTROY ALL OTHER POEM CARDS. THEN, PUT UP TO 4 CARDS FROM YOUR HAND UNDER THIS ONE. AT THE START OF YOUR TURN, DISCARD 1 CARD FROM UNDER THIS.

REDUCE DAMAGE DEALT TO ALL HERO TARGETS BY 1.

CARDS UNDER THIS CARD ARE NOT IN PLAY. AT THE END OF YOUR TURN, IF NO CARDS REMAIN UNDER THIS ONE, DESTROY THIS CARD.

STEADY ON, LADS! LASSIES, HEARTY ON!
LIFT YOUR EYES TO THE SKIES
HEARTY ON, LADS! LASSIES, STEADY ON!
LET YOUR WISE HEART TAKE RISE

FlatOnHisFace@yahoo.com

Illustration on www.hypebot.com

MARCH OF MACHISMO



ONGOING, POEM

WHEN THIS CARD ENTERS PLAY, DESTROY ALL OTHER POEM CARDS. THEN, PUT UP TO 4 CARDS FROM YOUR HAND UNDER THIS ONE. AT THE START OF YOUR TURN, DISCARD 1 CARD FROM UNDER THIS.

AT THE END OF EACH HERO TURN, THAT PLAYER MAY DRAW A CARD.

CARDS UNDER THIS CARD ARE NOT IN PLAY. AT THE END OF YOUR TURN, IF NO CARDS REMAIN UNDER THIS ONE, DESTROY THIS CARD.

REMAIN VIGIL - ON YOUR GUARD
MOVE FORTH, SOLDIER - TAKE THE FIELD
WADE THROUGH BLOODSHED - YARD BY YARD
DO NOT FALTER - NEVER YIELD!

FlatOnHisFace@yahoo.com

Illustration on www.canstockphoto.com

POUSING REVERIE



ONGOING, POEM

WHEN THIS CARD ENTERS PLAY, DESTROY ALL OTHER POEM CARDS. THEN, PUT UP TO 4 CARDS FROM YOUR HAND UNDER THIS ONE. AT THE START OF YOUR TURN, DISCARD 1 CARD FROM UNDER THIS.

YOU MAY PLAY AN ADDITIONAL CARD DURING YOUR PLAY PHASE. ON ANOTHER PLAYER'S PLAY PHASE, YOU MAY DISCARD 1 CARD FROM UNDER THIS. IF YOU DO, THAT PLAYER MAY PLAY A CARD.

CARDS UNDER THIS CARD ARE NOT IN PLAY. AT THE END OF YOUR TURN, IF NO CARDS REMAIN UNDER THIS ONE, DESTROY THIS CARD.

SITTING SADDLED, SORE
SINEWY STRENGTHEN
SWIFT SWORDARM, SWIFT SWORD
SOLDIER'S SWEET SANCTION

FlatOnHisFace@yahoo.com

Illustration on www.canstockphoto.com

"GLORY" THE STOLEN BLADE



EQUIPMENT, RELIC, LIMITED

WHEN THIS CARD IS DESTROYED, IF IN PLAY, "EVISCERATOR" DEALS 1 TARGET 2 MELEE DAMAGE AND 1 TARGET 1 MELEE DAMAGE.

POWER: SELECT MELEE OR RADIANT AS THIS CARD'S DAMAGE TYPE. BRUNI DEALS 1 TARGET 4 DAMAGE OF THAT TYPE.

"IT WAS BURIED IN THE FAMILY CRYPT. A LITTLE RE-TEMPERING AND POLISH, IT'LL BE GOOD AS NEW."
- BRUNI, CITY OF THE DEAD #13

FlatOnHisFace@yahoo.com

illustration by DeuceOhNegative on DeviantArt.com

BRUNI

ORDER
OF THE
ROSE

"GLORY" THE STOLEN BLADE



EQUIPMENT, RELIC, LIMITED

WHEN THIS CARD IS DESTROYED, IF IN PLAY, "EVISCERATOR" DEALS 1 TARGET 2 MELEE DAMAGE AND 1 TARGET 1 MELEE DAMAGE.

POWER: SELECT MELEE OR RADIANT AS THIS CARD'S DAMAGE TYPE. BRUNI DEALS 1 TARGET 4 DAMAGE OF THAT TYPE.

"IT WAS BURIED IN THE FAMILY CRYPT. A LITTLE RE-TEMPERING AND POLISH, IT'LL BE GOOD AS NEW."
- BRUNI, CITY OF THE DEAD #13

FlatOnHisFace@yahoo.com

illustration by DeuceOhNegative on DeviantArt.com

BRUNI

ORDER
OF THE
ROSE

UNNECESSARY TOWER SHIELD



EQUIPMENT, LIMITED

BRUNI IS IMMUNE TO PROJECTILE DAMAGE.

THIS CARD IS INDESTRUCTIBLE WHENEVER YOU WANT IT TO BE.

WHEN BRUNI WOULD BE DEALT DAMAGE, YOU MAY DESTROY THIS CARD. IF YOU DO, PREVENT THAT DAMAGE.

"IT'S MORE LIKE A 2-INCH THICK STEEL WALL."
- BRUNI, IMMOVABLE #8

FlatOnHisFace@yahoo.com

illustration on blackironberenike.tumblr.com

BRUNI

ORDER
OF THE
ROSE

UNNECESSARY TOWER SHIELD



EQUIPMENT, LIMITED

BRUNI IS IMMUNE TO PROJECTILE DAMAGE.

THIS CARD IS INDESTRUCTIBLE WHENEVER YOU WANT IT TO BE.

WHEN BRUNI WOULD BE DEALT DAMAGE, YOU MAY DESTROY THIS CARD. IF YOU DO, PREVENT THAT DAMAGE.

"IT'S MORE LIKE A 2-INCH THICK STEEL WALL."
- BRUNI, IMMOVABLE #8

FlatOnHisFace@yahoo.com

illustration on blackironberenike.tumblr.com

BRUNI

ORDER
OF THE
ROSE

SINGING LESSONS (EPIC)



ONE-SHOT

DRAW A CARD.

IF A POEM IS IN PLAY, MOVE 1 CARD FROM UNDER IT TO YOUR HAND. DESTROY THE POEM.

SEARCH YOUR DECK OR TRASH FOR A POEM CARD AND PUT IT INTO PLAY. SHUFFLE YOUR DECK, IF YOU SEARCHED IT.

"HE HAS TH' AWESOME VOICE O' A GOD."
- SCARLET, EXALTED #4

FlatOnHisFace@yahoo.com

Illustration by magikseagul on DeviantArt.com

BRUNI



SINGING LESSONS (EPIC)



ONE-SHOT

DRAW A CARD.

IF A POEM IS IN PLAY, MOVE 1 CARD FROM UNDER IT TO YOUR HAND. DESTROY THE POEM.

SEARCH YOUR DECK OR TRASH FOR A POEM CARD AND PUT IT INTO PLAY. SHUFFLE YOUR DECK, IF YOU SEARCHED IT.

"HE HAS TH' AWESOME VOICE O' A GOD."
- SCARLET, EXALTED #4

FlatOnHisFace@yahoo.com

Illustration by magikseagul on DeviantArt.com

BRUNI



SINGING LESSONS (EPIC)



ONE-SHOT

DRAW A CARD.

IF A POEM IS IN PLAY, MOVE 1 CARD FROM UNDER IT TO YOUR HAND. DESTROY THE POEM.

SEARCH YOUR DECK OR TRASH FOR A POEM CARD AND PUT IT INTO PLAY. SHUFFLE YOUR DECK, IF YOU SEARCHED IT.

"HE HAS TH' AWESOME VOICE O' A GOD."
- SCARLET, EXALTED #4

FlatOnHisFace@yahoo.com

Illustration by magikseagul on DeviantArt.com

BRUNI



SINGING LESSONS (EPIC)



ONE-SHOT

DRAW A CARD.

IF A POEM IS IN PLAY, MOVE 1 CARD FROM UNDER IT TO YOUR HAND. DESTROY THE POEM.

SEARCH YOUR DECK OR TRASH FOR A POEM CARD AND PUT IT INTO PLAY. SHUFFLE YOUR DECK, IF YOU SEARCHED IT.

"HE HAS TH' AWESOME VOICE O' A GOD."
- SCARLET, EXALTED #4

FlatOnHisFace@yahoo.com

Illustration by magikseagul on DeviantArt.com

BRUNI



SUMMON BEWILDERING STEED



ONE-SHOT

IF "EVISCERATOR" IS NOT IN PLAY, PUT "EVISCERATOR" INTO PLAY, LIZARD STEED SIDE UP. BRUNI REGAINS 2 HP.

OTHERWISE, BRUNI AND "EVISCERATOR" EACH REGAIN 2 HP.

"THEY DON'T WANT IT IN TOWN FOR FEAR IT'LL EAT PEOPLE. I'M WORRIED WHAT HAPPENS WHEN IT'S UNATTENDED."
- SABRA, LIZARD TALES #11

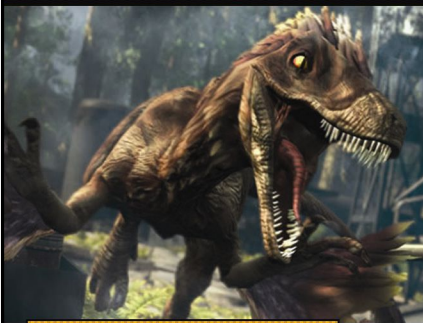
FlatOnHisFace@yahoo.com

Illustration on www.primalcarnage.com

BRUNI

ORDER
OF THE
ROSE

SUMMON BEWILDERING STEED



ONE-SHOT

IF "EVISCERATOR" IS NOT IN PLAY, PUT "EVISCERATOR" INTO PLAY, LIZARD STEED SIDE UP. BRUNI REGAINS 2 HP.

OTHERWISE, BRUNI AND "EVISCERATOR" EACH REGAIN 2 HP.

"THEY DON'T WANT IT IN TOWN FOR FEAR IT'LL EAT PEOPLE. I'M WORRIED WHAT HAPPENS WHEN IT'S UNATTENDED."
- SABRA, LIZARD TALES #11

FlatOnHisFace@yahoo.com

Illustration on www.primalcarnage.com

BRUNI

ORDER
OF THE
ROSE

SUMMON BEWILDERING STEED



ONE-SHOT

IF "EVISCERATOR" IS NOT IN PLAY, PUT "EVISCERATOR" INTO PLAY, LIZARD STEED SIDE UP. BRUNI REGAINS 2 HP.

OTHERWISE, BRUNI AND "EVISCERATOR" EACH REGAIN 2 HP.

"THEY DON'T WANT IT IN TOWN FOR FEAR IT'LL EAT PEOPLE. I'M WORRIED WHAT HAPPENS WHEN IT'S UNATTENDED."
- SABRA, LIZARD TALES #11

FlatOnHisFace@yahoo.com

Illustration on www.primalcarnage.com

BRUNI

ORDER
OF THE
ROSE

SUMMON BEWILDERING STEED



ONE-SHOT

IF "EVISCERATOR" IS NOT IN PLAY, PUT "EVISCERATOR" INTO PLAY, LIZARD STEED SIDE UP. BRUNI REGAINS 2 HP.

OTHERWISE, BRUNI AND "EVISCERATOR" EACH REGAIN 2 HP.

"THEY DON'T WANT IT IN TOWN FOR FEAR IT'LL EAT PEOPLE. I'M WORRIED WHAT HAPPENS WHEN IT'S UNATTENDED."
- SABRA, LIZARD TALES #11

FlatOnHisFace@yahoo.com

Illustration on www.primalcarnage.com

BRUNI

ORDER
OF THE
ROSE

TAKING POINT



ONGOING, LIMITED

WHENEVER A HERO WOULD BE DEALT DAMAGE FROM A VILLAIN TARGET, REDIRECT THAT DAMAGE TO BRUNI.

POWER: DRAW A CARD. DESTROY THIS CARD.

"MEAT SHIELD OR NOT, YOU DON'T WANT TO BE STANDING IN FRONT OF HIM WHEN HE CHARGES AHEAD."
- RHIANISSA, CITY OF THE DEAD #4

FlatOnHisFace@yahoo.com

illustration on blackironberenike.tumblr.com

BRUNI

ORDER
OF THE
ROSE

TAKING POINT



ONGOING, LIMITED

WHENEVER A HERO WOULD BE DEALT DAMAGE FROM A VILLAIN TARGET, REDIRECT THAT DAMAGE TO BRUNI.

POWER: DRAW A CARD. DESTROY THIS CARD.

"MEAT SHIELD OR NOT, YOU DON'T WANT TO BE STANDING IN FRONT OF HIM WHEN HE CHARGES AHEAD."
- RHIANISSA, CITY OF THE DEAD #4

FlatOnHisFace@yahoo.com

illustration on blackironberenike.tumblr.com

BRUNI

ORDER
OF THE
ROSE

FEED THE LIZARD



ONE-SHOT

THE NEXT TIME BRUNI DEALS DAMAGE, INCREASE THAT DAMAGE BY 2.

IF A POEM IS IN PLAY, PUT THE TOP 2 CARDS OF YOUR DECK UNDER THAT CARD.

IF "EVISCERATOR" IS IN PLAY, THAT CARD REGAINS 3 HP.

"I JUST NEED A MOMENT TO RE-FOCUS."
- BRUNI, QUEST FOR THE TREE #3

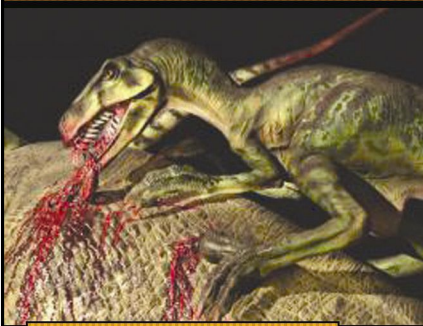
FlatOnHisFace@yahoo.com

illustration on dino.wikia.com

BRUNI

ORDER
OF THE
ROSE

FEED THE LIZARD



ONE-SHOT

THE NEXT TIME BRUNI DEALS DAMAGE, INCREASE THAT DAMAGE BY 2.

IF A POEM IS IN PLAY, PUT THE TOP 2 CARDS OF YOUR DECK UNDER THAT CARD.

IF "EVISCERATOR" IS IN PLAY, THAT CARD REGAINS 3 HP.

"I JUST NEED A MOMENT TO RE-FOCUS."
- BRUNI, QUEST FOR THE TREE #3


FlatOnHisFace@yahoo.com

illustration on dino.wikia.com

BRUNI

ORDER
OF THE
ROSE

INTIMIDATINGLY BREAKS STUFF



ONGOING

WHEN THIS CARD ENTERS PLAY, DESTROY EITHER 1 OF YOUR EQUIPMENT CARDS OR THIS CARD.

NON-HERO TARGETS CANNOT DEAL DAMAGE.

AT THE START OF YOUR TURN, DESTROY THIS CARD.

"EVER SINCE SHASTA, I REALIZED THAT IF I BREAK MY OWN STUFF, NO-ONE DARES CONFRONT ME."
- BRUNI, IMMOVABLE #7

FlatOnHisFace@yahoo.com illustration on www.yourprops.com



INTIMIDATINGLY BREAKS STUFF



ONGOING

WHEN THIS CARD ENTERS PLAY, DESTROY EITHER 1 OF YOUR EQUIPMENT CARDS OR THIS CARD.

NON-HERO TARGETS CANNOT DEAL DAMAGE.

AT THE START OF YOUR TURN, DESTROY THIS CARD.

"EVER SINCE SHASTA, I REALIZED THAT IF I BREAK MY OWN STUFF, NO-ONE DARES CONFRONT ME."
- BRUNI, IMMOVABLE #7

FlatOnHisFace@yahoo.com illustration on www.yourprops.com



TRAVELLER'S BACKPACK

Backpack



All Items



ONE-SHOT

SEARCH YOUR DECK OR TRASH FOR AN EQUIPMENT CARD AND PUT IT INTO PLAY.

SHUFFLE YOUR DECK, IF YOU SEARCHED IT.

IF "EVISCERATOR" IS IN PLAY, DRAW A CARD.


"HOW'D THE STATUE OF IMPERIAL OUTPOST GET IN THERE?"
- BRUNI, EXALTED #17

FlatOnHisFace@yahoo.com illustration on www.vgblogger.com q.v. al



TRAVELLER'S BACKPACK

Backpack



All Items



ONE-SHOT

SEARCH YOUR DECK OR TRASH FOR AN EQUIPMENT CARD AND PUT IT INTO PLAY.

SHUFFLE YOUR DECK, IF YOU SEARCHED IT.

IF "EVISCERATOR" IS IN PLAY, DRAW A CARD.

"HOW'D THE STATUE OF IMPERIAL OUTPOST GET IN THERE?"
- BRUNI, EXALTED #17

FlatOnHisFace@yahoo.com illustration on www.vgblogger.com q.v. al



TOO HEAVY TO LIFT ARMOR



EQUIPMENT, LIMITED

REDUCE DAMAGE DEALT TO BRUNI BY 1.

"IT TOOK FIVE OXEN TO
DRAG THAT PLATEMAIL FROM THE SMITHY,
BUT HE STILL MOVES NIMBLY IN IT."
- HOUSE ROSE SQUIRE, EXALTED #5

FlatOnHisFace@yahoo.com

illustration on www.bluegarter.com

BRUNI

ORDER
OF THE
ROSE

TOO HEAVY TO LIFT ARMOR



EQUIPMENT, LIMITED

REDUCE DAMAGE DEALT TO BRUNI BY 1.

"IT TOOK FIVE OXEN TO
DRAG THAT PLATEMAIL FROM THE SMITHY,
BUT HE STILL MOVES NIMBLY IN IT."
- HOUSE ROSE SQUIRE, EXALTED #5

FlatOnHisFace@yahoo.com

illustration on www.bluegarter.com

BRUNI

ORDER
OF THE
ROSE

IMPRACTICAL SADDLE



EQUIPMENT, LIMITED

INCREASE DAMAGE DEALT BY BRUNI BY 1.

REDUCE DAMAGE DEALT TO "EVISCERATOR" BY 1.

"YEE-HAW!"
- BRUNI, HUNT OF THE FANTARIA

FlatOnHisFace@yahoo.com

illustration by FuryOn1989 on DeviantArt.com

BRUNI

ORDER
OF THE
ROSE

IMPRACTICAL SADDLE



EQUIPMENT, LIMITED

INCREASE DAMAGE DEALT BY BRUNI BY 1.

REDUCE DAMAGE DEALT TO "EVISCERATOR" BY 1.

"YEE-HAW!"
- BRUNI, HUNT OF THE FANTARIA

FlatOnHisFace@yahoo.com

illustration by FuryOn1989 on DeviantArt.com

BRUNI

ORDER
OF THE
ROSE

TRAVELLING CULINARY KIT



EQUIPMENT, LIMITED

WHEN YOU DESTROY A TARGET, ALL HERO TARGETS MAY EACH REGAIN 1 HP.

"I CAN GUARANTEE THAT IT IS DELICIOUS. I WILL NOT CONFIRM WHERE IT CAME FROM."

- BRUNI, A DAY IN THE LIFE: BRUNI

FlatOnHisFace@yahoo.com

illustration on www.trendhunter.com

BRUNI

ORDER
OF THE
ROSE

TRAVELLING CULINARY KIT



EQUIPMENT, LIMITED

WHEN YOU DESTROY A TARGET, ALL HERO TARGETS MAY EACH REGAIN 1 HP.

"I CAN GUARANTEE THAT IT IS DELICIOUS. I WILL NOT CONFIRM WHERE IT CAME FROM."

- BRUNI, A DAY IN THE LIFE: BRUNI

FlatOnHisFace@yahoo.com

illustration on www.trendhunter.com

BRUNI

ORDER
OF THE
ROSE

KILLING SPREE



ONE-SHOT

CHOOSE ONE OF THE FOLLOWING:

BRUNI DEALS 1 TARGET 5 MELEE DAMAGE; OR

IF IN PLAY, "EVISCERATOR" DEALS HIMSELF 1 IRREDUCIBLE MELEE DAMAGE AND DEALS ALL NON-HERO TARGETS 3 MELEE DAMAGE EACH.

"I'D TAKE PITY ON THEM, BUT THEY DON'T VALUE THEIR LIVES ENOUGH TO RUN AWAY. CALL IT 'THINNING THE HERD.'"

- ALPHA, IMMOVABLE #2

FlatOnHisFace@yahoo.com

illustration on darksouls.wikia.com

BRUNI

ORDER
OF THE
ROSE

KILLING SPREE



ONE-SHOT

CHOOSE ONE OF THE FOLLOWING:

BRUNI DEALS 1 TARGET 5 MELEE DAMAGE; OR

IF IN PLAY, "EVISCERATOR" DEALS HIMSELF 1 IRREDUCIBLE MELEE DAMAGE AND DEALS ALL NON-HERO TARGETS 3 MELEE DAMAGE EACH.

"I'D TAKE PITY ON THEM, BUT THEY DON'T VALUE THEIR LIVES ENOUGH TO RUN AWAY. CALL IT 'THINNING THE HERD.'"

- ALPHA, IMMOVABLE #2

FlatOnHisFace@yahoo.com

illustration on darksouls.wikia.com

BRUNI

ORDER
OF THE
ROSE

ASKING QUESTIONS LATER



ONE-SHOT

CHOOSE ONE OF THE FOLLOWING:

BRUNNI DEALS 1 TARGET 3 MELEE DAMAGE; OR

IF IN PLAY, "EVISCERATOR" DEALS 1 TARGET 3 IRREDUCIBLE MELEE DAMAGE.

"THEY ALWAYS SAY 'NO,'
SO I'M NOT ASKING."

- BRUNNI, A DAY IN THE LIFE: BRUNNI

FlatOnHisFace@yahoo.com

Illustration on stuffpoint.com

BRUNNI

ORDER
OF THE
ROSE

ASKING QUESTIONS LATER



ONE-SHOT

CHOOSE ONE OF THE FOLLOWING:

BRUNNI DEALS 1 TARGET 3 MELEE DAMAGE; OR

IF IN PLAY, "EVISCERATOR" DEALS 1 TARGET 3 IRREDUCIBLE MELEE DAMAGE.

"THEY ALWAYS SAY 'NO,'
SO I'M NOT ASKING."

- BRUNNI, A DAY IN THE LIFE: BRUNNI

FlatOnHisFace@yahoo.com

Illustration on stuffpoint.com

BRUNNI

ORDER
OF THE
ROSE

DOESN'T FIT IN THE DOOR



ONE-SHOT

YOU MAY DESTROY 1 ENVIRONMENT CARD.

IF "EVISCERATOR" IS IN PLAY, YOU MAY DESTROY 1 ONGOING CARD.

"IF THEY INSIST ON BUILDING
THE DOOR FRAMES 8-FEET HIGH, DON'T
BLAME ME FOR MAKING MY OWN ENTRY."

- BRUNNI, LIZARD TALES #5

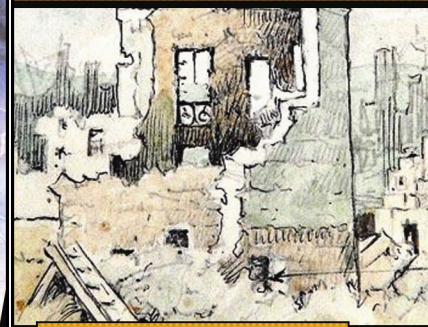
FlatOnHisFace@yahoo.com

Illustration by Leonard Smith on www.telegraph.co.uk

BRUNNI

ORDER
OF THE
ROSE

DOESN'T FIT IN THE DOOR



ONE-SHOT

YOU MAY DESTROY 1 ENVIRONMENT CARD.

IF "EVISCERATOR" IS IN PLAY, YOU MAY DESTROY 1 ONGOING CARD.

"IF THEY INSIST ON BUILDING
THE DOOR FRAMES 8-FEET HIGH, DON'T
BLAME ME FOR MAKING MY OWN ENTRY."

- BRUNNI, LIZARD TALES #5

FlatOnHisFace@yahoo.com

Illustration by Leonard Smith on www.telegraph.co.uk

BRUNNI

ORDER
OF THE
ROSE

ORDER
OF
THE
ROSE
32


BRUNI
the Butcher



POWER: UNNECESSARY ROUGHNESS
BRUNI DEALS 1 TARGET
2 MELEE DAMAGE.

FlatOnHisFace@yahoo.com illustration on darksouls.wikidot.com

→THIRD PARTY — STANDARD→



→ ONE HERO MAY USE A POWER NOW.

→ IF "EVISCERATOR" IS IN PLAY, THAT CARD MAY EITHER REGAIN UP TO 2 HP OR DESTROY AN ONGOING CARD.

→ SELECT A TARGET. REDUCE DAMAGE DEALT TO THAT TARGET BY 1, UNTIL THE START OF YOUR NEXT TURN.

FlatOnHisFace@yahoo.com illustration by Vaxillus on DeviantArt.com

"Eviscerator" 10



LIZARD STEED

WHENEVER BRUNI DEALS DAMAGE TO A TARGET, THAT TARGET CANNOT DEAL DAMAGE UNTIL THE START OF YOUR NEXT TURN.

WHEN THIS CARD IS DESTROYED, BRUNI DEALS HIMSELF 2 IRREDUCIBLE PSYCHIC DAMAGE, AND THIS CARD IS REMOVED FROM THE GAME.

AT THE START OF YOUR TURN, IF THIS CARD HAS NOT FLIPPED THIS TURN, FLIP THIS CARD.

illustration on www.exchange3d.com & www.redbubble.com

"Eviscerator" 10



FÉROCIOUS LIZARD

AT THE END OF YOUR TURN, THIS CARD DEALS 1 TARGET 3 MELEE DAMAGE.

WHEN THIS CARD IS DESTROYED, BRUNI DEALS HIMSELF 2 IRREDUCIBLE PSYCHIC DAMAGE, AND THIS CARD IS REMOVED FROM THE GAME.

AT THE START OF YOUR TURN, IF THIS CARD HAS NOT FLIPPED THIS TURN, YOU MAY DISCARD 1 CARD TO FLIP THIS CARD.

illustration on www.newgrounds.com

ORDER
OF
THE
ROSE
30

BRUNI
the Skald



POWER: RECITE
PUT THE TOP CARD OF YOUR TRASH UNDER A POEM CARD. BRUNI MAY DEAL 1 TARGET AND HIMSELF 3 MELEE DAMAGE EACH.

FlatOnHisFace@yahoo.com illustration on darksouls.wikidot.com

→THIRD PARTY — PROMO→



→ ONE PLAYER MAY PUT A CARD FROM HIS OR HER HAND INTO PLAY NOW.

→ IF "EVISCERATOR" IS IN PLAY, THAT CARD MAY EITHER REGAIN 2 HP OR DEAL 1 TARGET 2 MELEE DAMAGE.

→ UNTIL YOUR NEXT TURN, INCREASE ALL DAMAGE DEALT BY 1.

FlatOnHisFace@yahoo.com illustration by SharkAlpha on DeviantArt.com